

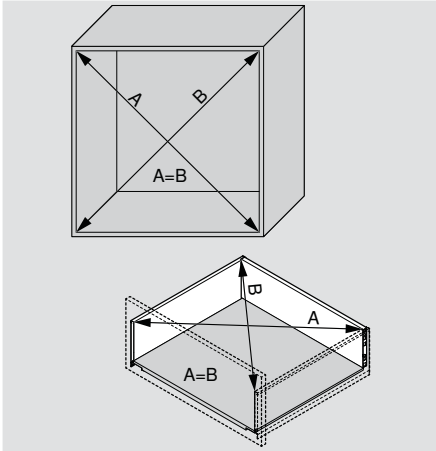
## TIP-ON BLUMOTION



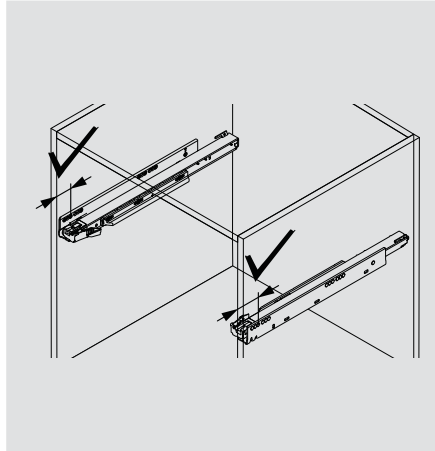
## Manufacturer Tips

In order for you as a manufacturer and your customers as future users to enjoy long-term use of drawers with TIP-ON BLUMOTION, we ask you to please consider the following points during manufacture, assembly and transportation.

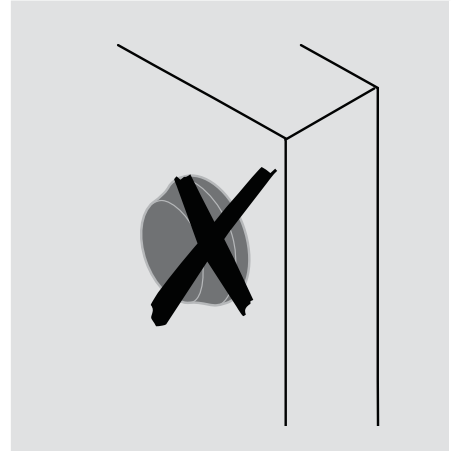
### Cabinet Construction



To ensure a front gap of at least 2.5 mm, precise manufacturing is required, so it should be ensured that planned measurements and angle accuracy are adhered to.



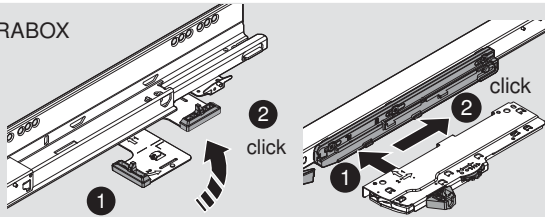
Observe exact depth position of both cabinet profiles.



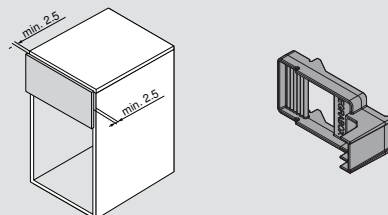
Do not use bumpers, as this restricts the trigger function.

### Assembly and Adjustment

#### LEGRABOX

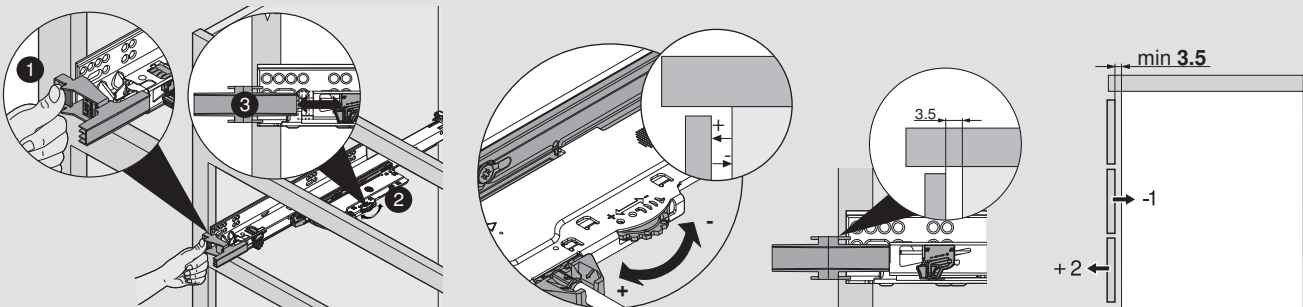


Engage TIP-ON BLUMOTION components until there is an audible clicking sound.



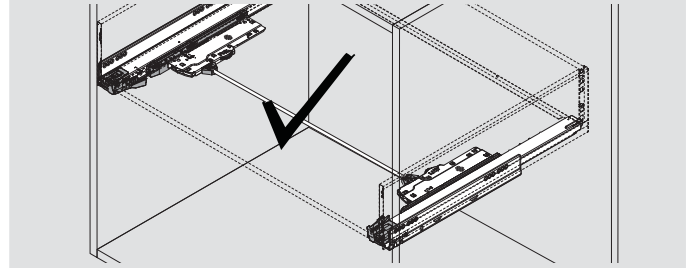
The front gap should be adjusted identically on each side to a minimum of 2.5 mm.

### Depth adjustment



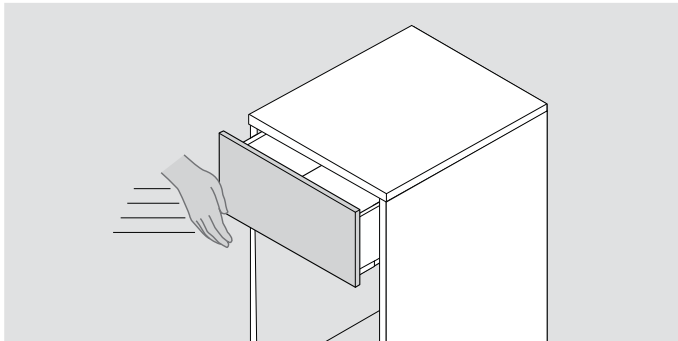


Select the correct TIP-ON BLUMOTION unit: To identify the unit, select the shaded area imprinted on the nylon as shown above.

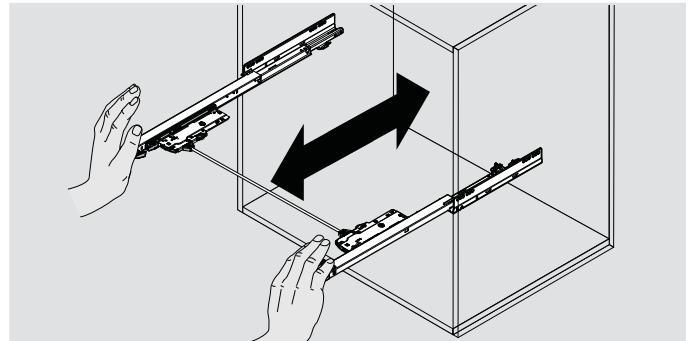


To achieve the optimal trigger range for TIP-ON BLUMOTION, use a synchronization rod with adapters.

Operation



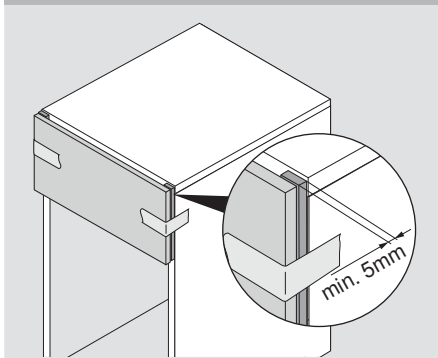
To tension TIP-ON springs, always close drawers with TIP-ON BLUMOTION with same force. Reduce the amount of force used accordingly for loaded drawers.



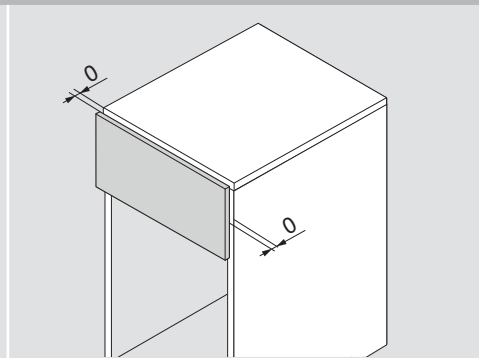
For LEGRABOX open or close cabinet profiles with synchronization in parallel, in order to prevent damage to the synchronization adapter.

Transportation

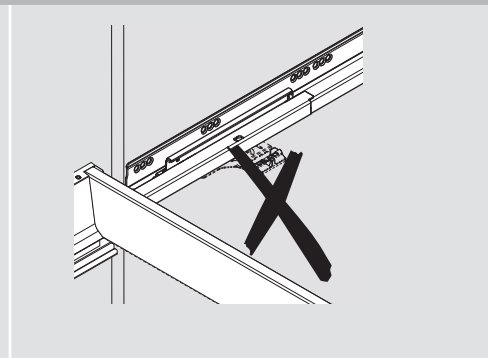
To prevent damage to pre-assembled furniture during transportation:



a) clamp an insert between front and cabinet or



b) adjust the front gap to 0 mm or



c) transport without latch



You can find further information on TIP-ON BLUMOTION assembly at:  
 > [www.blum.com/documentstiponblumotion](http://www.blum.com/documentstiponblumotion)