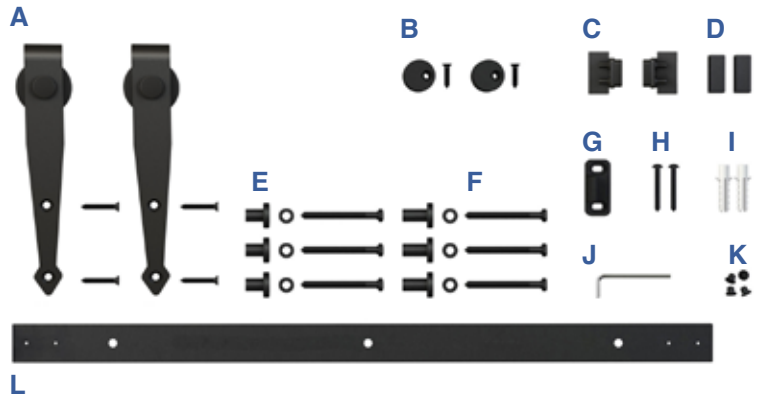


FURNITURE

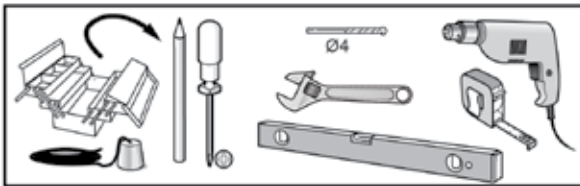
SLIDING DOOR HARDWARE

MODEL No. FSDH-ARWKIT-*--4

INSTALLATION MANUAL



TOOLS REQUIRED



- Plumb Line
- Pencil
- Phillips Head Screwdriver
- 4mm Drill Bit
- Wrench
- Level
- Power Drill
- Tape Measure

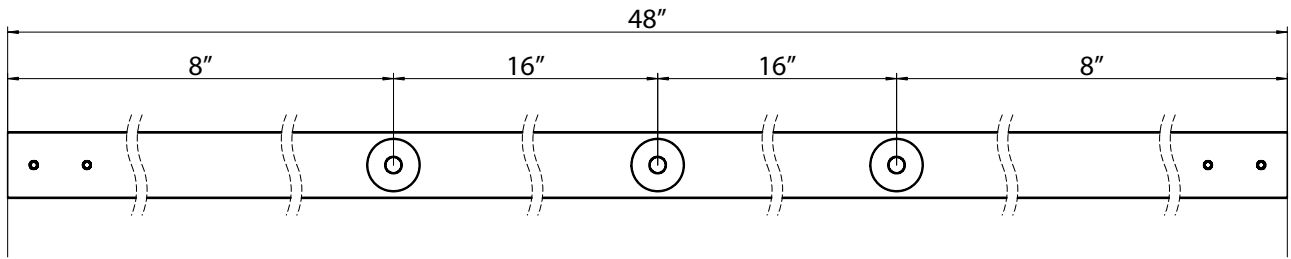
INCLUDED IN KIT

| | | |
|----------|--|--------|
| A | Door Roller Hardware | x2 |
| B | Anti-Jump Disk | x2 |
| C | Adjustable Door Stop Hardware | x2 |
| D | End Cap | x2 |
| E | Mounting Bracket for 3/4" and 1" Doors | x3 ea. |
| F | M6x60 Bolt + Washer | x6 |
| G | Routed Door Guide | x1 |
| H | ST4.2x35 Screw | x2 |
| I | Anchor | x2 |
| J | 1.5mm Allen Key | x1 |
| K | Hole Cover | x4 |
| L | 48" Rail | x1 |

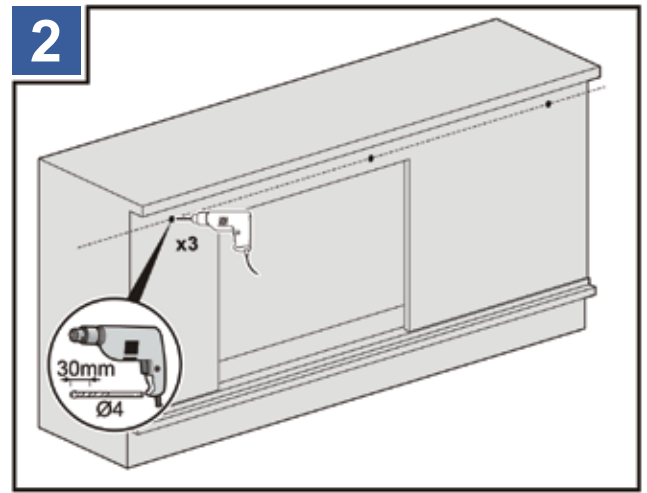
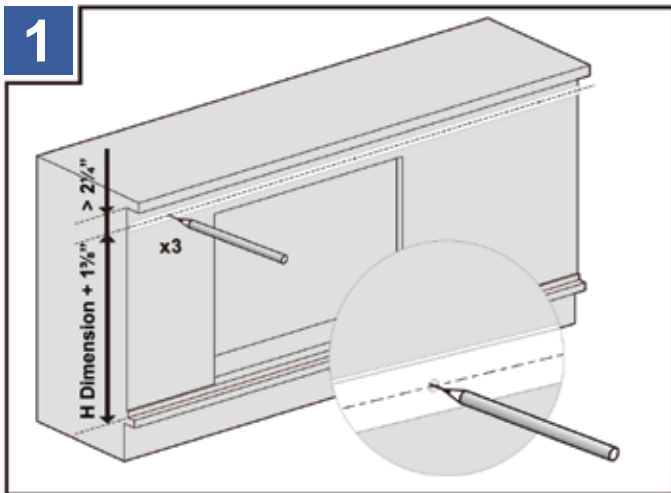
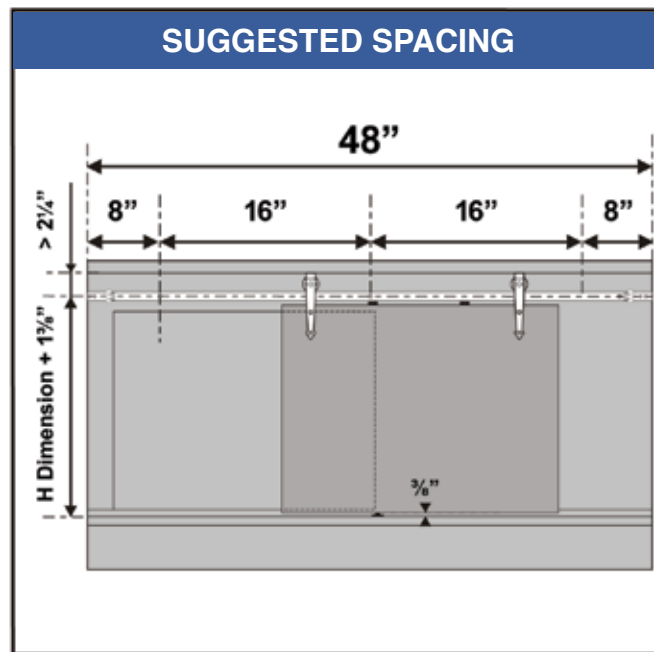
PLEASE NOTE: The installation manual is a suggested guideline. Adjustments may need to be made based on your specific application.

Outwater Industries, Inc. assumes no liability for improper installation.

UNDERSTANDING YOUR RAIL

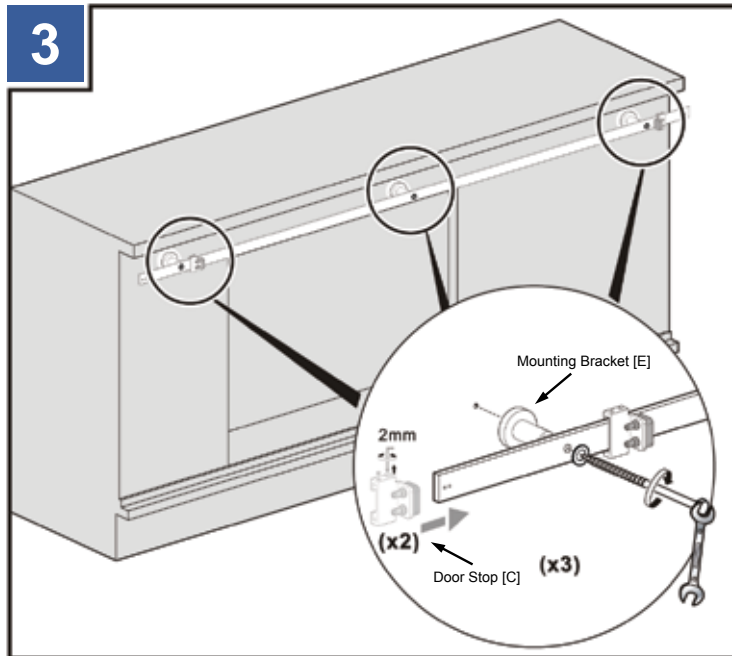


INSTALLATION

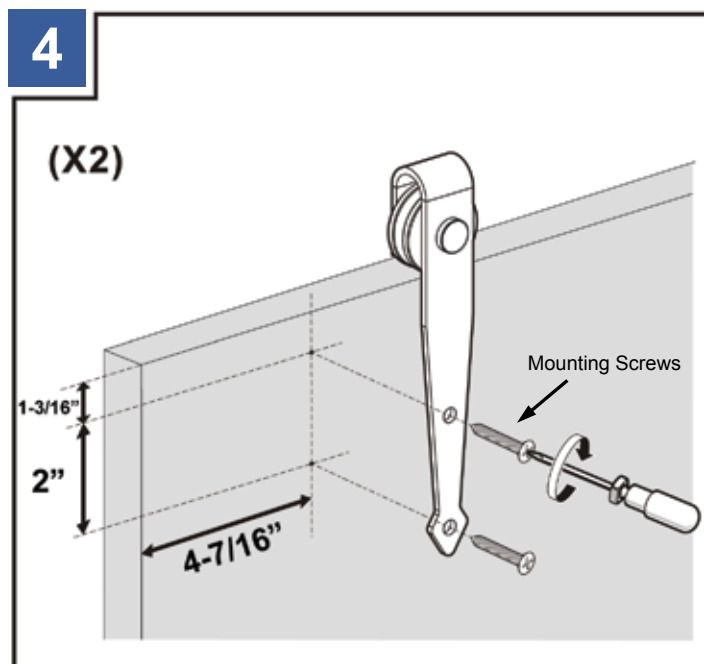


Using a pencil, mark the locations where you will drill holes. See "Suggested Spacing" for recommended dimensions.

Using a power drill with a 4mm drill bit, drill holes as indicated.



Attach the adjustable door stops [C] prior to securing the rail [L] to the Mounting Brackets [E],

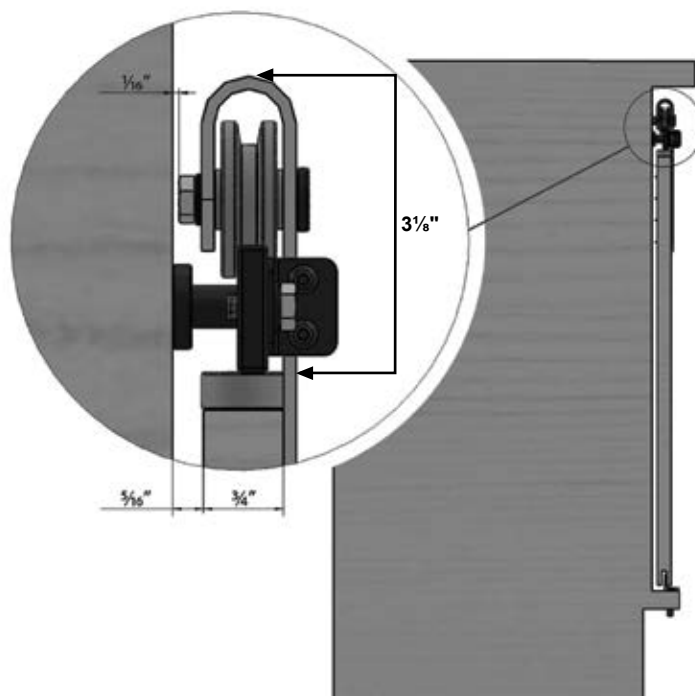


Drill holes into the doors as indicated. Attach the roller straps [A].

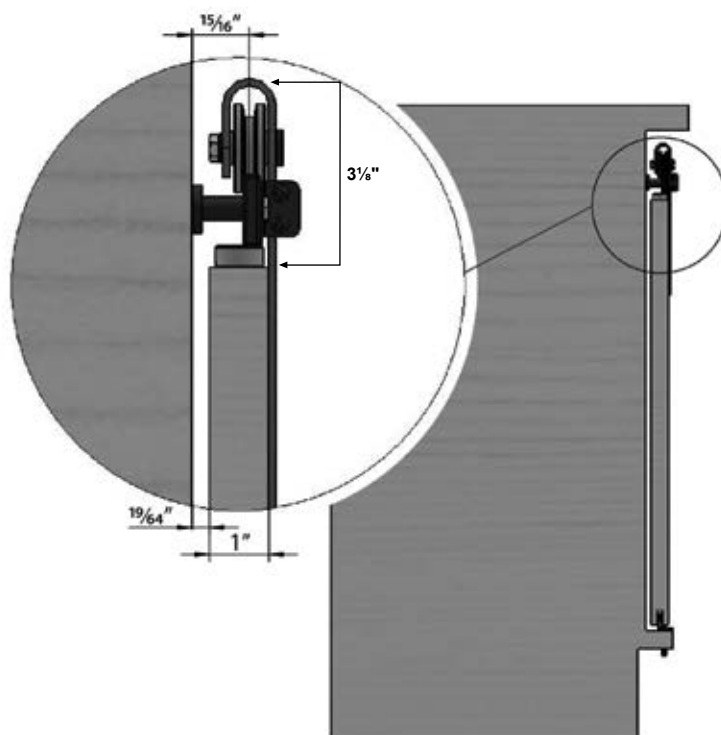
It is suggested that the roller straps [A] be mounted 4-7/16" from the edge of the doors to the neck of the roller straps.

NOTE: Trimming the rail will alter the position of the roller hardware. Adjust accordingly.

FOR $\frac{3}{4}$ " DOORS

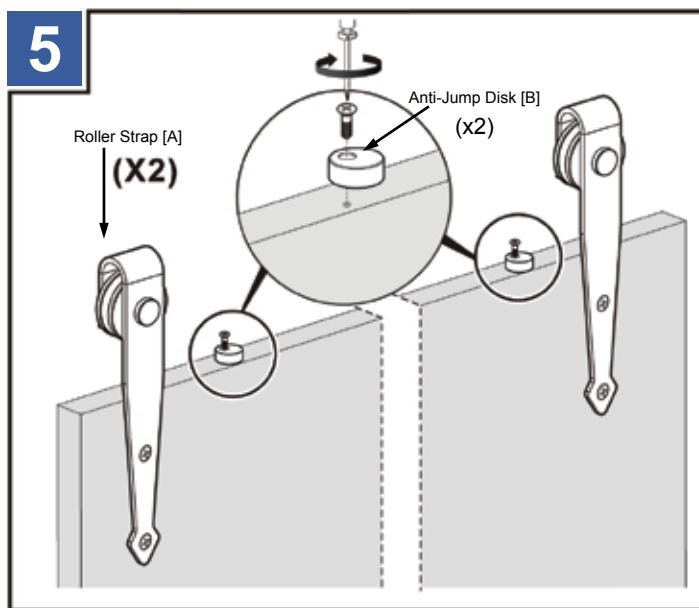


FOR 1" DOORS

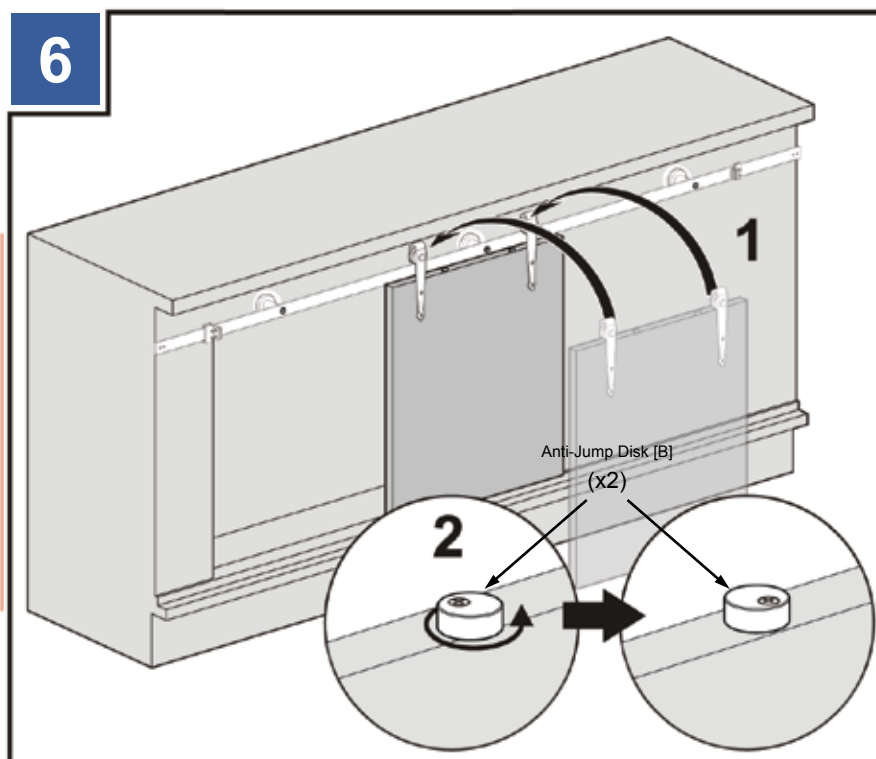


Allow a minimum 3-1/8" clearance above the doors.

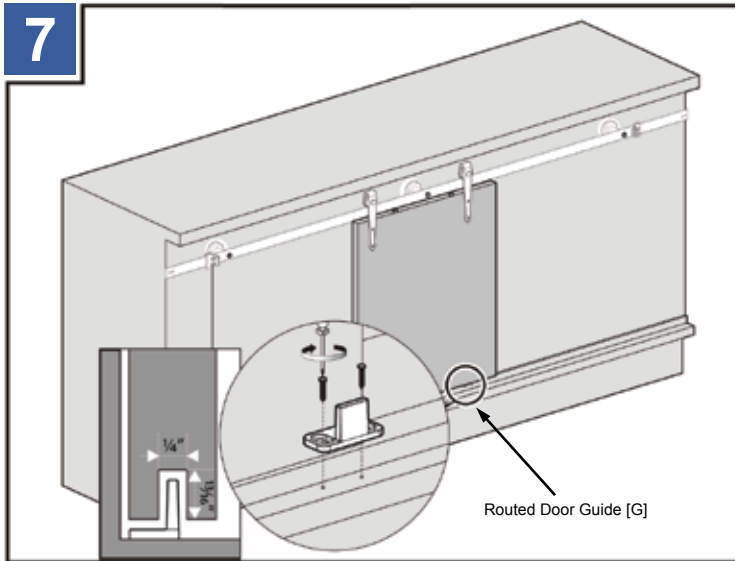
Outwater Industries, Inc. assumes no liability for improper installation.



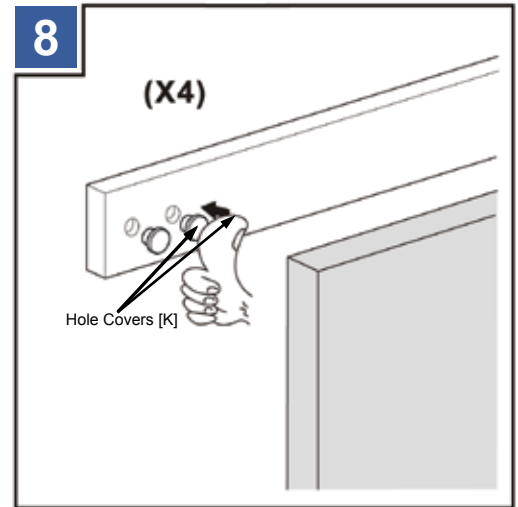
Attach the anti-jump disks [B] to the door.



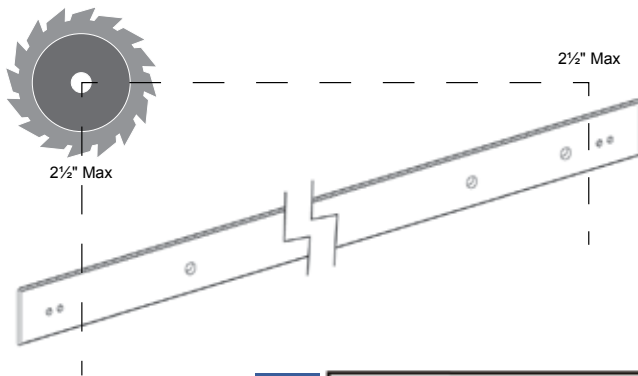
Attach the door to the rail [L] and lock the anti-jump disks [B] into position. The door should be routed beforehand if using the routed door guide [G].



If using the routed door guide [G], install it at this time.

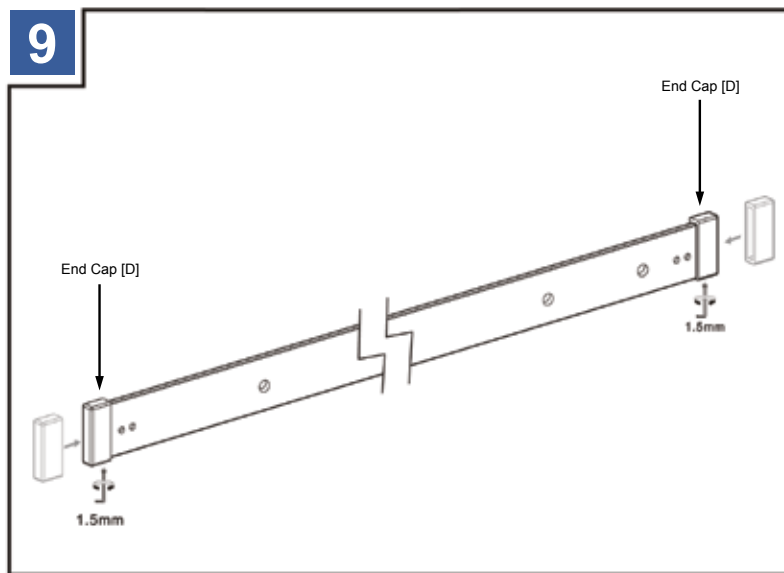


Use the hole covers [K] to give the rail a finished look.



The rail can be trimmed if necessary using a band saw. Use blades suitable for iron or stainless steel depending on your rail.

NOTE: If you are trimming the rail, do so equally. Each rail can be trimmed equally up to 6" on both sides. However; trimming will alter the position of the roller hardware. Adjust accordingly.



Once cut, add the end caps [D] to the ends of the rail and secure with a set screw.