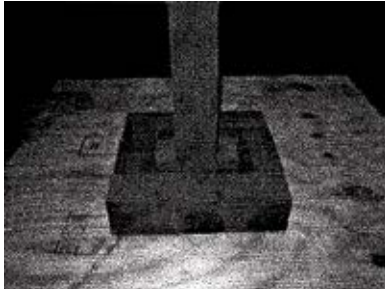
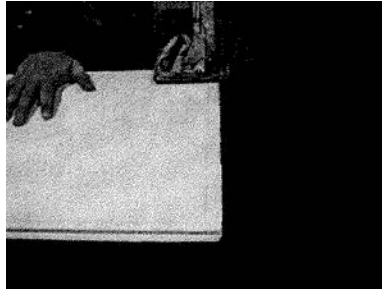


CRAFTSMAN SERIES: PEDESTAL OR NEWEL POST INSTALLATION INSTRUCTIONS

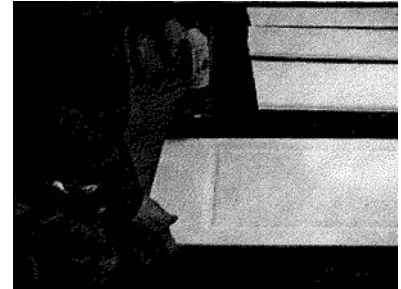
WARNING: Precision machined edges of Poly-Classic Craftsman column components can be extremely sharp. Use of appropriate personal protection equipment is required. *** USE OF POLYURETHANE GLUE IS RECOMMENDED.



1. Install blocking around load bearing support (typically pressure treated post). Blocking should be made from pressure treated wood, and must be the same size as the inside of the pedestal/newel.



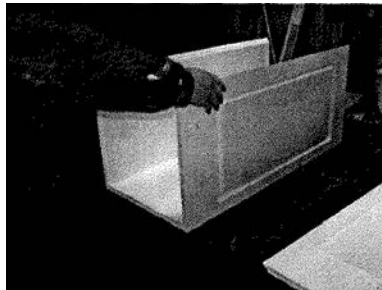
2. Smooth pedestals may be cut to shorter lengths if needed.



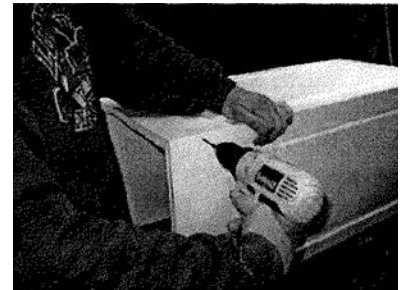
3. If using non-corrosive screws, pre-drill panels. See the Craftsman no-taper column installation instructions for information on proper joint assembly and where to pre-drill.



4. Apply polyurethane glue to both edges of ONE PANEL only.



5. Assemble two panels to glued edges of panel from step 4.



6. Screw or pin-nail the three panels together into one unit.



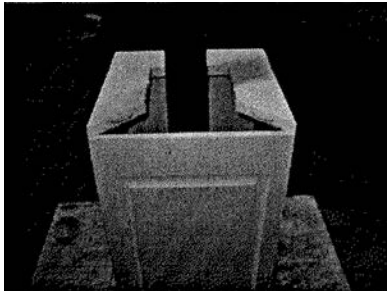
7. Slide the three-panel shaft unit over the blocking, then attach. Apply glue to exposed vertical edges of panels.



8. Attach final panel. For use as a newel, additional blocking should be added between panels and post. (Post would be cut off at height of shaft.)



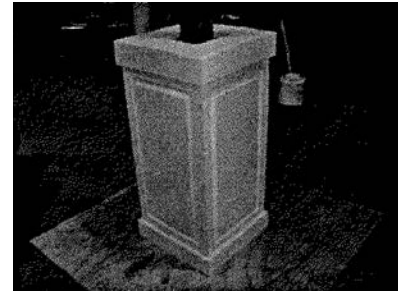
9. Apply glue to backs and mitered edges of base moldings, then assemble to bottom of platform (same as no-taper column bases).



10. NOTE: Top platform now extends beyond top of shaft section (not shown). Moldings are applied under the top platform. Assemble top platform on top of shaft. Glue mitered edges, and attach with screws or nails. (Pyramid caps do not use top platform.)



11. Apply glue to backs and mitered edges of cap moldings, then assemble to shaft below top platform with screws or pin-nails.



12. Caulk all seams, fill all nail/screw holes, clean surfaces with cleaner recommended by paint manufacturer. Finish with two coats of acrylic latex paint.