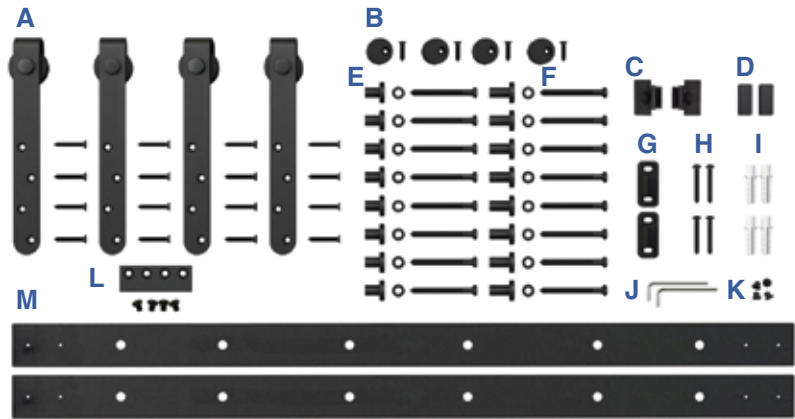


# FURNITURE

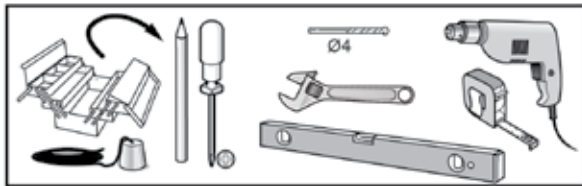
## SLIDING DOOR HARDWARE

MODEL No. FSDH-STPKT-\*--10-DD

## INSTALLATION MANUAL



### TOOLS REQUIRED



- Plumb Line
- Pencil
- Phillips Head Screwdriver
- 4mm Drill Bit
- Wrench
- Level
- Power Drill
- Tape Measure

### INCLUDED IN KIT

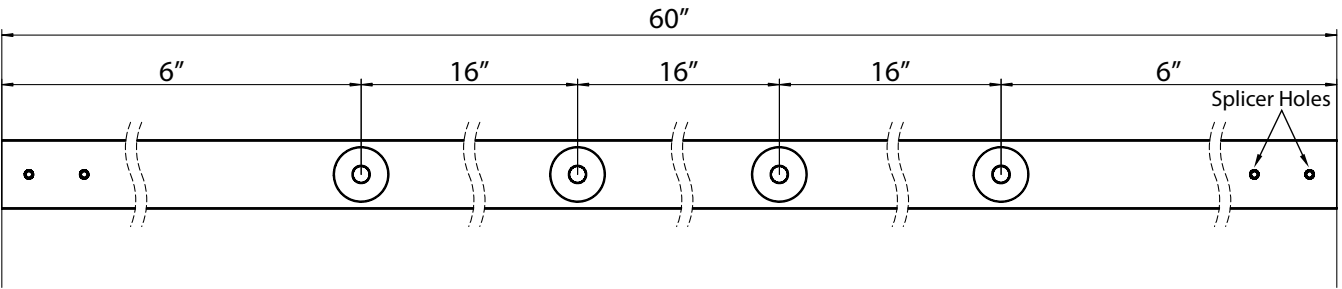
<b>A</b>	Door Roller Hardware	x4
<b>B</b>	Anti-Jump Disk	x4
<b>C</b>	Adjustable Door Stop	x2
<b>D</b>	End Cap	x2
<b>E</b>	Mounting Bracket for 3/4" and 1" Doors	x8 ea.
<b>F</b>	M6x60 Bolt + Washer	x16
<b>G</b>	Routed Door Guide	x2
<b>H</b>	ST4.2x35 Screw	x4
<b>I</b>	Anchor	x4
<b>J</b>	1.5mm Allen Key	x2
<b>K</b>	Hole Cover	x4
<b>L</b>	Splicer + Screws	x1
<b>M</b>	60" Rail	x2

PLEASE NOTE: The installation manual is a suggested guideline. Adjustments may need to be made based on your specific application.

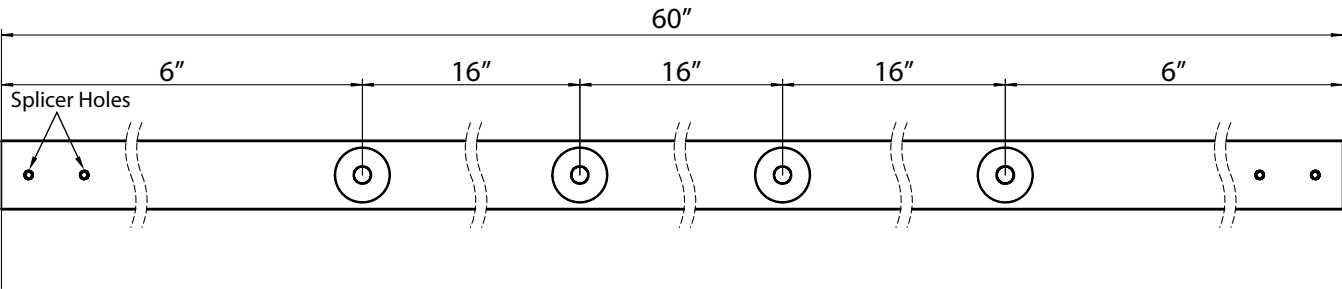
Outwater Industries, Inc. assumes no liability for improper installation.

UNDERSTANDING YOUR RAILS

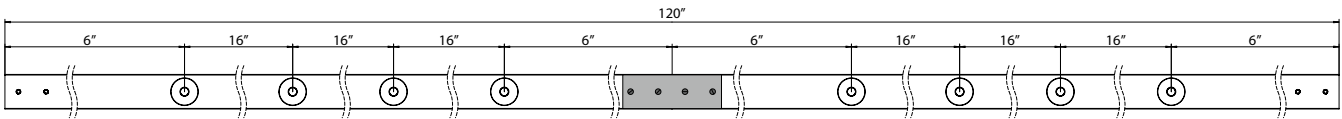
LEFT RAIL



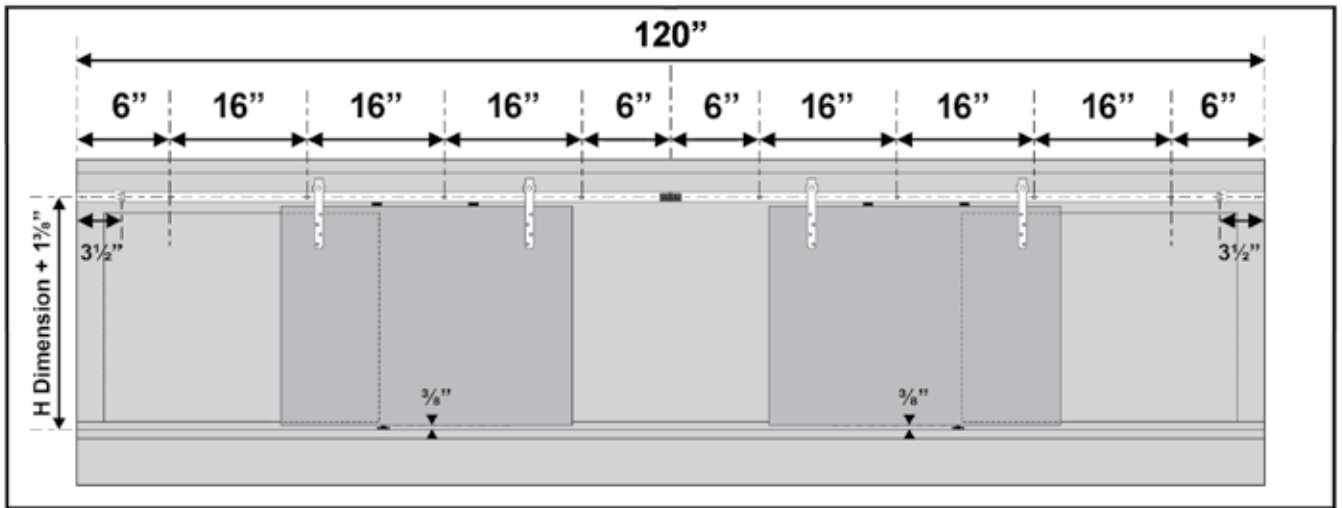
RIGHT RAIL



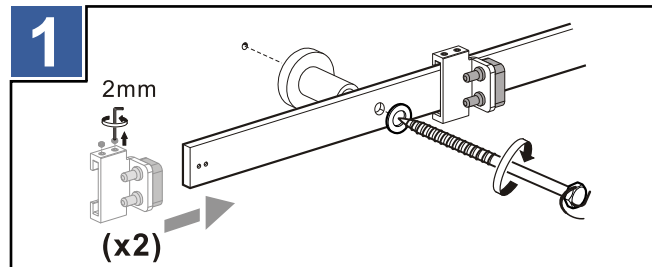
LEFT AND RIGHT RAILS JOINED BY SPLICER



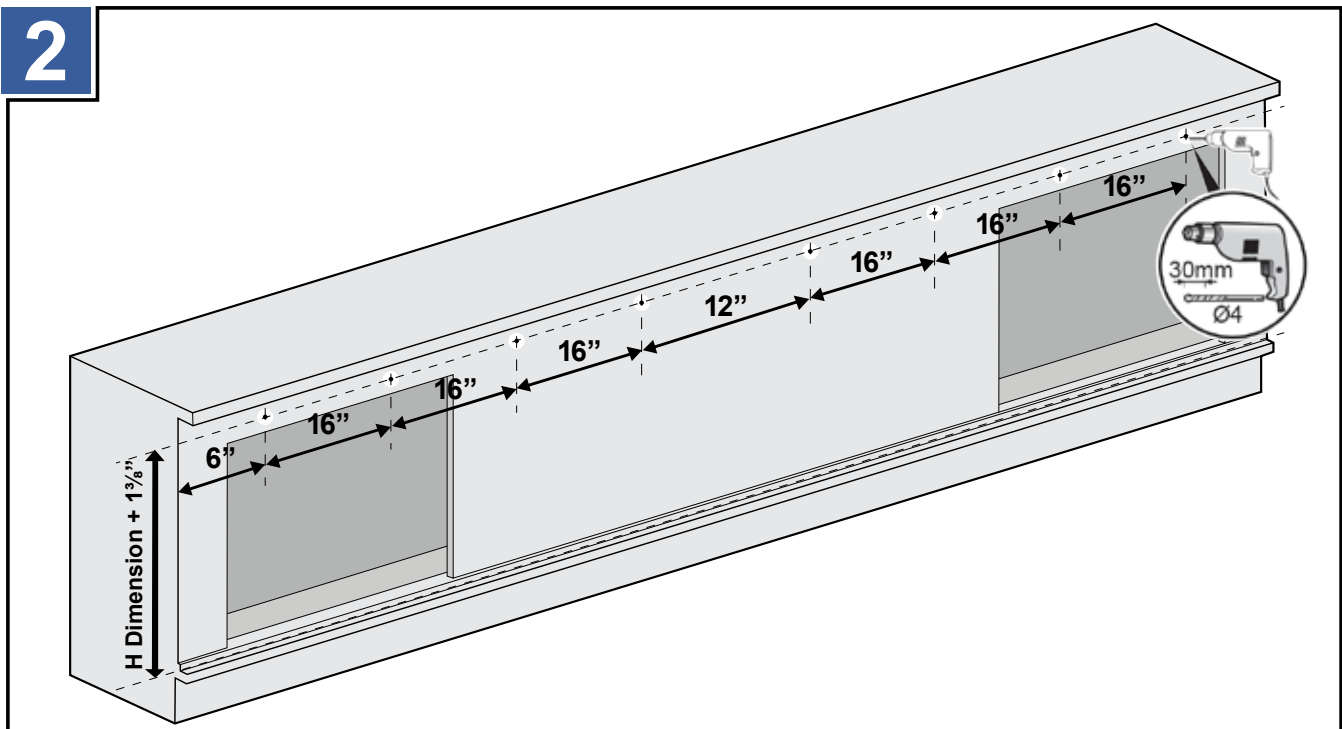
## INSTALLATION



Using a pencil, mark the locations where you will drill holes as indicated.



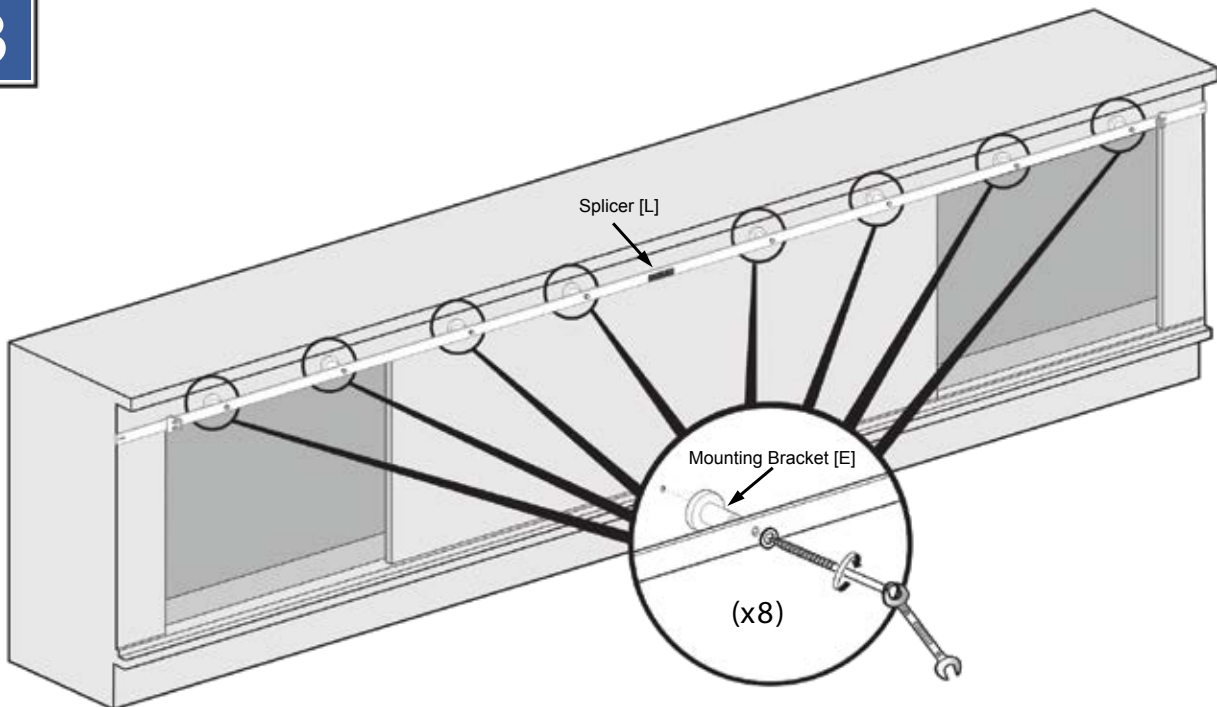
Before beginning installation, attach the door stops [C] to both rails [M].



Using a power drill with a 4mm drill bit, drill holes as indicated.

Outwater Industries, Inc. assumes no liability for improper installation.

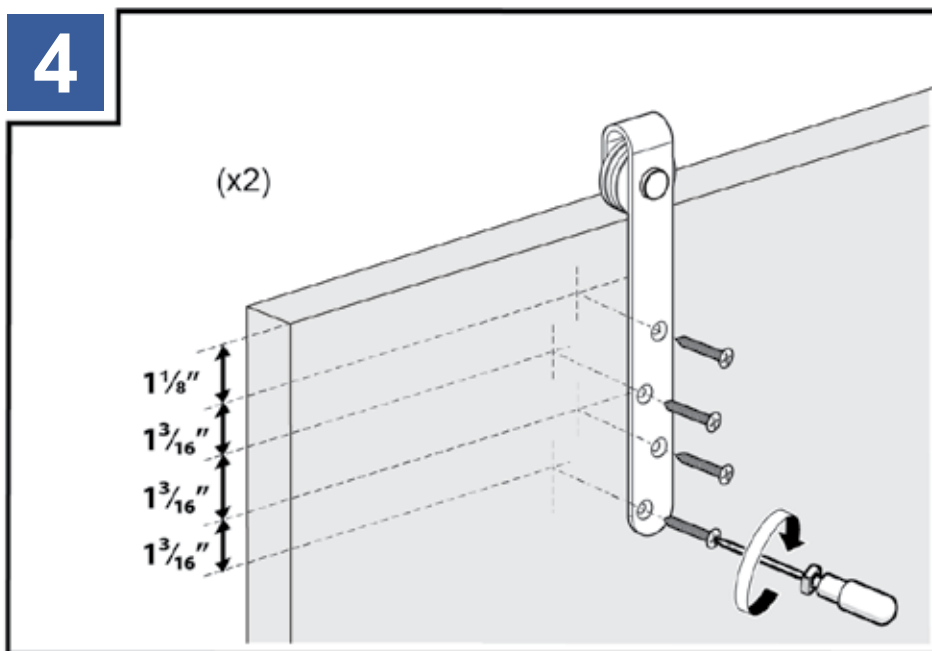
# 3



1. Install the first rail, and mounting brackets [E].
2. Line up the second rail against the first and install with mounting brackets. Secure the two rails with the splicer [L].

NOTE: If mounting to a wall, fasteners must be mounted into solid wood studs, wall blocking or, a wood header board when additional projection is needed. (Example: When using as TV shutters)

# 4

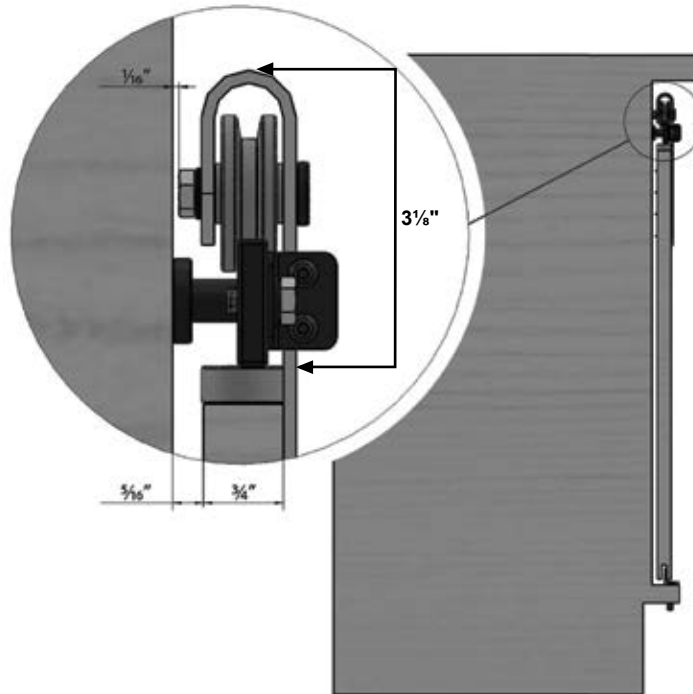


Drill holes into the doors as indicated. Attach the door rollers [A].

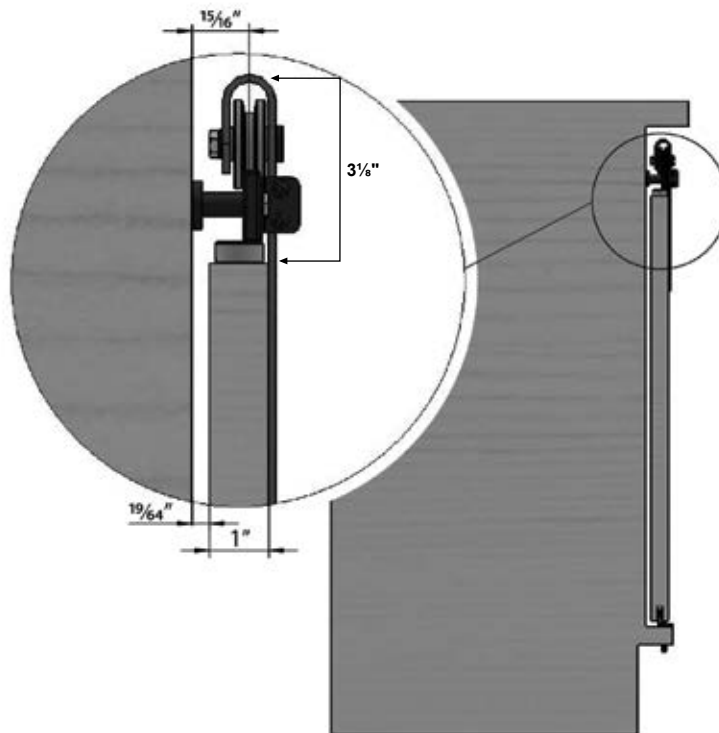
It is suggested that the door rollers [A] be mounted 5" from the edge of the doors to the neck of the rollers.

NOTE: Trimming the rail will alter the position of the roller hardware. Adjust accordingly.

## FOR $\frac{3}{4}$ " DOORS

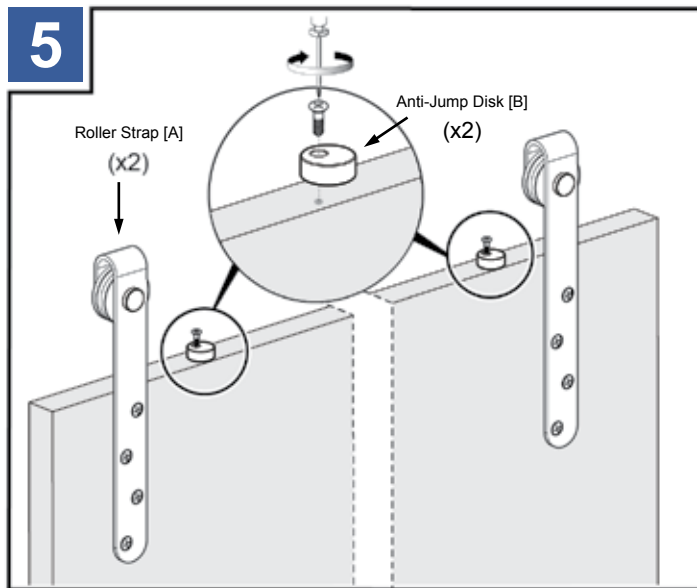


## FOR 1" DOORS

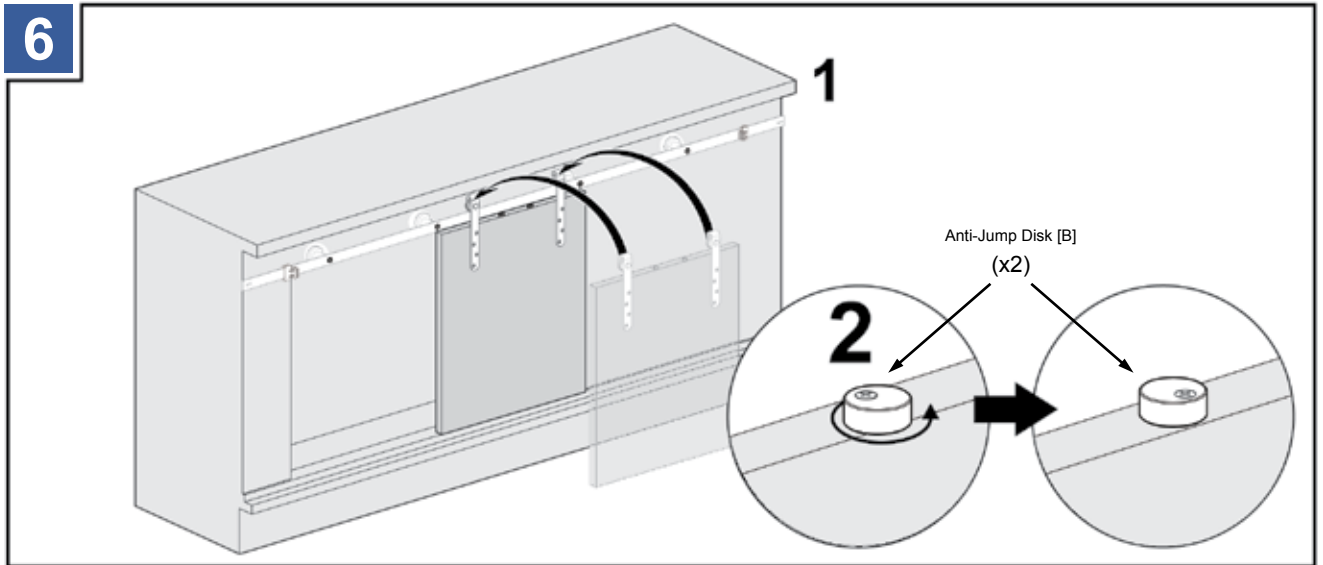


Allow a minimum 3-1/8" clearance above the doors.

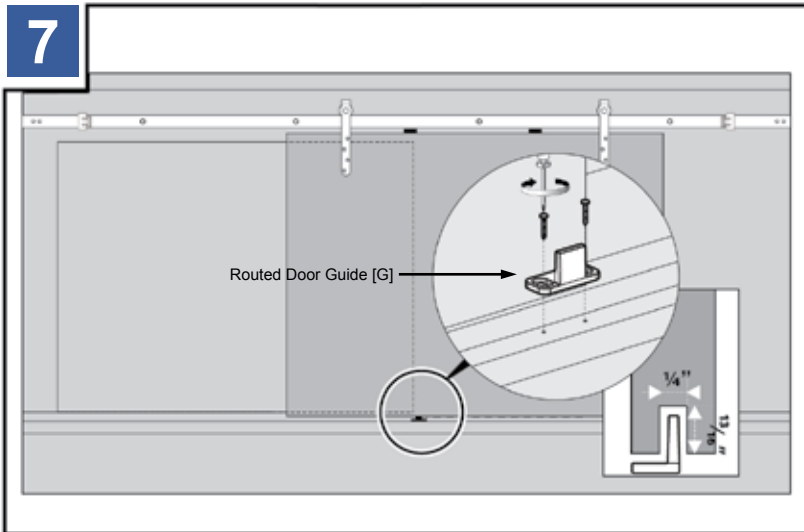
Outwater Industries, Inc. assumes no liability for improper installation.



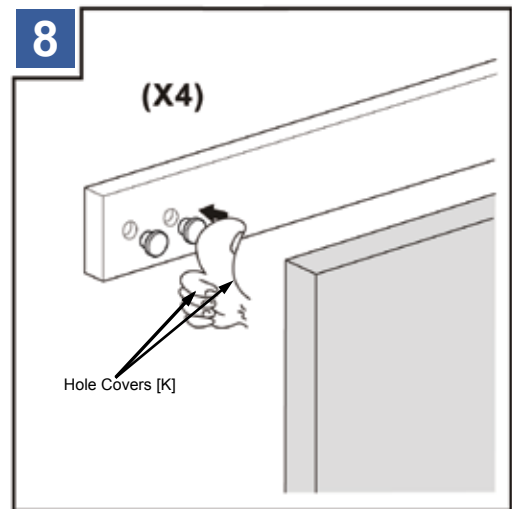
Attach the anti-jump disks [B] to the doors.



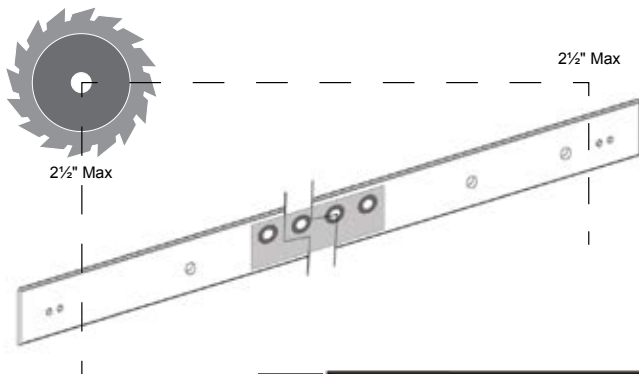
Attach the doors to the rail [L] and lock the anti-jump disks [B] into position. Doors should be routed beforehand if using the routed door guides [G].



If using the routed door guides [G], install them at this time. Repeat steps 4-7 for additional door.

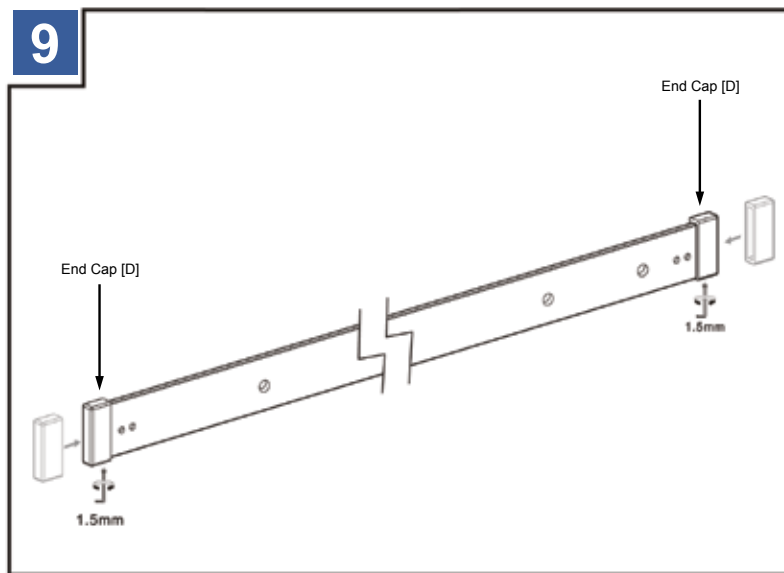


Use the hole covers [K] to give the rail a finished look.



The rail can be trimmed if necessary using a band saw or hacksaw. Use blades suitable for iron or stainless steel depending on your rail.

NOTE: If you are trimming the rail, do so equally. Each rail can be trimmed equally up to 2 1/2" from one (1) side of each length of rail. Holes for splicer must remain intact on one side of the rail. However; trimming will alter the position of the roller hardware. Adjust accordingly.



Once cut, add the end caps [D] to the ends of the rail and secure with a set screw.



Maximum T.V. size of 60" with a width of 56"