



FAUX STONE PANELS: INSTALLATION INSTRUCTIONS

EASY INSTALLATION GUIDELINES

Our faux stone panels are easily installed with no special equipment or expertise needed and will not absorb moisture and will not warp, rot, or crack. Panels are simply installed using construction adhesive and screws. Our faux stone panels may expand and contract with temperature changes, so install panels as tightly as possible and follow the storage and installation instructions carefully. The following instruction guidelines will help provide the best installation results for your next project.

STORING THE FAUX STONE PANELS

Store panels flat on a surface in order to avoid 'bowing'. If panels are stored in an upright position and do bow, lay them flat and they will self-correct.

HOT WEATHER INSTALLATION

If panels have been stored under hot conditions, allow panels to cool down to normal temperature before installation.

COLD WEATHER INSTALLATION

If panels have been stored at room temperature or cooler, you may install panels immediately.

RECOMMENDED ADHESIVE

We recommend PL® Premium construction adhesive or similar adhesive.

MECHANICAL FASTENING

Use either exterior or interior screws as appropriate for your installation.

TOOLS REQUIRED

Our faux stone products are easily installed using tools found in almost everyone's toolbox. To complete a wall, we recommend using:

- Screws
- Construction Adhesive/Glue (we recommend PL® Premium construction adhesive)
- Screwdriver (battery-operated/electric preferred)
- Sandpaper or sanding block
- Caulking gun
- Color-matched caulk if desired
- **Optional:** Hacksaw (For custom cutting: jig saw, band saw, your preference)

GETTING STARTED

Our faux stone panels should be installed on solid backing. To install, simply run a bead of adhesive along the back of each panel and at each end. Make sure to spread the adhesive with a spackle knife or other appropriate tool. Use enough adhesive so that the entire surface of the cut edge at each end is covered.

We strongly recommend use of construction adhesive and screws in every joint. All joints should be butt joints on straight runs and mitered joints in corners. Texture Plus® panels may require additional shimming and trimming for alignment.

HOW TO COVER A WALL USING OUR FAUX STONE INTERLOCKING PANELS OR STANDARD PANELS

Apply glue to backs of the panels and screw into wall using dry wall screws (interior) or galvanized screws (exterior).

Be sure that the tongue portion of the panel is on top of the panel, groove portion on the bottom. Slide the adjoining panel into the interlocking groove, then glue and screw in place. Repeat until the row is complete. To begin the next row, offset the next row by $\frac{1}{2}$ sheet to provide a more seamless effect. Follow finishing instructions below.



1. Glue back and fasten with screws on level.



2. Glue back and slide next piece in.



3. Tap in for snug fit.



4. Insert flat panel edge into groove at top edge.



5. Tap in for snug fit.



6. Offset each row by one half sheet.



7. Keep each panel to level line.



8. Be sure to fasten all corners and edge.



9. Continue to glue, fit, and fasten.



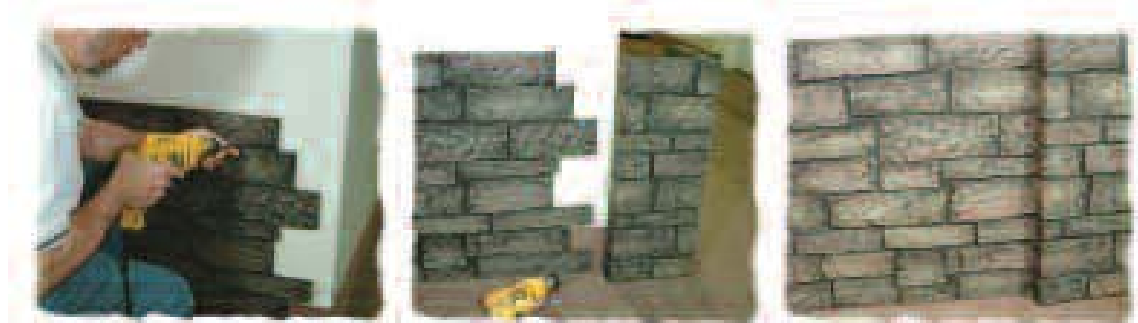
10. Caulk seams to finish.

HOW TO MITER A CORNER USING OUR FAUX STONE PANELS

First, set a table saw blade to a 45-degree angle. Then, cut miter to edge of a row of bricks. Next, take the remaining piece and rotate it 180 degrees to cut off the width of a $\frac{1}{2}$ brick. Check the two pieces for final fit. Then take the first piece and apply and spread glue to the back of the panel. Fit the glued piece to the wall and screw it to the wall using dry wall screws. Fit the second piece and then glue and screw in place. Gently roll edges into each other with a hand rounded object. Follow finishing instructions below.

HOW TO USE MOLDED CORNERS USING AN OVERLAID JOINT

First, finish the walls with the faux stone panels. Next, overlay the molded corner directly on top of the corner panels and check for fit. Apply glue to the back of the corner. Use longer screws to attach the corner to both corner panels and the wall being covered. Follow finishing instructions below.



1. Finish wall with faux stone panels.

2. Overlay molded corner, then glue and screw.

3. Use color matched caulk to finish.

HOW TO USE MOLDED CORNERS USING A BUTT JOINT

First, attach the molded corner to the wall by applying glue to the backside of the corner and screwing into wall using drywall screws. Next, align a faux stone standard panel (or trim an interlock panel) to the molded corner. Then apply glue to the back of the panels and screw into the wall using drywall screws. Follow finishing instructions below.

FINISHING INSTRUCTIONS FOR ALL PROJECTS

For a final finish, use a color matched caulk to fill all screw holes and spaces in the interlocking joints. Smooth the caulk and wipe away any excess (a wet rag works well) and finish the seams of the wall to complete the project.