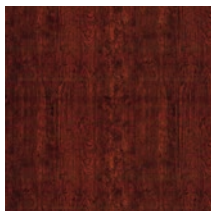
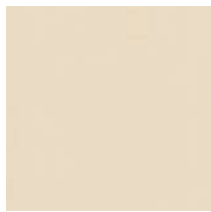


# FlexLam FINISHES

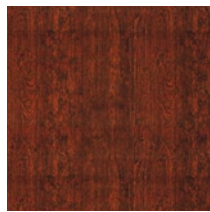
**ARGENT FINISHES** have color throughout and a metallic luster.  
Request physical samples as printed images may not be accurate.



**AFRICAN CHERRY**  
(\*AFCH)



**ALMOND**  
(\*AL)



**AMERICAN WALNUT**  
(\*AMW)



**ANTIQUÉ BRONZE**  
(\*ANTB)



**ARGENT BRONZE**  
(\*AB)



**ARGENT COPPER**  
(\*AC)



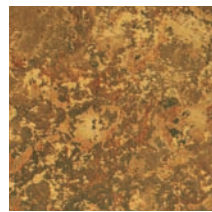
**ARGENT GOLD**  
(\*AG)



**ARGENT SILVER**  
(\*AS)



**BERMUDA BRONZE**  
(\*BB)



**BRONZE FANTASY**  
(\*BF)



**BRONZE STRATA**  
(\*BRSTR)



**BRUSHED ALUMINUM**  
(\*BA)



**BRUSHED COPPER**  
(\*BC)



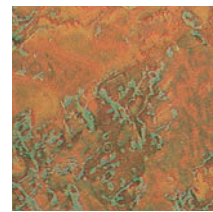
**BRUSHED NICKEL**  
(\*BN)



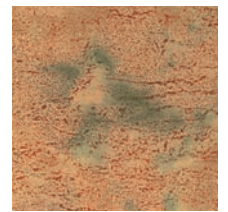
**BRUSHED ONYX**  
(\*BO)



**BRUSHED STAINLESS**  
(\*BS)



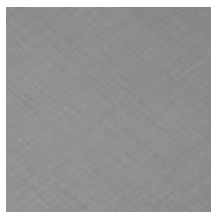
**COPPER FANTASY**  
(\*CF)



**CRACKED COPPER**  
(\*CC)



**CROSSHATCH SILVER**  
(\*CS)



**DIAMOND BRUSHED**  
(\*DB)



**ECCOFLEX BLACK**  
(\*EB)



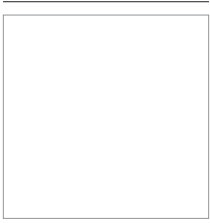
**ECCOFLEX TAN**  
(\*ET) *Paintable*



**GALVANIZED**  
(\*GAL)



**GLOSS BLACK**  
(\*BK)



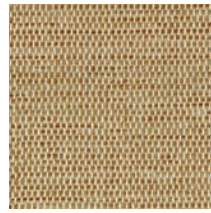
**GLOSS WHITE**  
(\*WH) *Paintable*



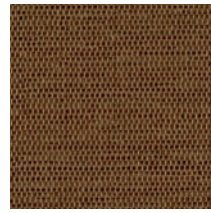
**LAVENDER**  
(\*LAV)



**LIGHT MAPLE**  
(\*LM)



**LINEN BEIGE**  
(\*LINB)



**LINEN CHOCOLATE**  
(\*LC)



**MERLOT**  
(\*MER)



**MIRROR**  
(\*M)



**MIRROR GOLD**  
(\*MIRG)



**MIRROR GREEN**  
(\*MGR)



**MIRROR RED**  
(\*MR)



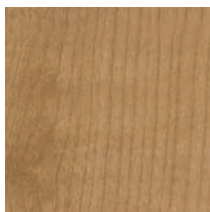
**MOONSTONE COPPER**  
(\*MC)



**MUTED GOLD**  
(\*MG)



**OIL RUBBED BRONZE**  
(\*ORB)



**OREGON ASH**  
(\*OA)



**PEARWOOD**  
(\*PW)



**SMOKED PEWTER**  
(\*SP)



**STEEL STRATA**  
(\*STSTR)



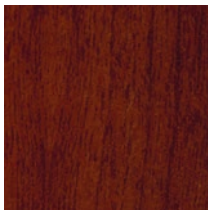
**TRAVERTINE**  
(\*TRA)



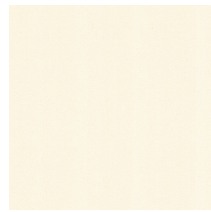
**VINTAGE METAL**  
(\*VM)



**WASHED OAK**  
(\*WO)



**WELSH CHERRY**  
(\*WC)



**WINTER WHITE**  
(\*WW)



**+** Available Colors for Gridmax™ and Outlet Covers

**>** Available Colors for Trims (Minimums Apply)

**Ⓢ** High Traffic Finishes have color throughout so scratches are less visible

**\*** Now Available Tuffcote™ on selected finishes. A revolutionary protection shield that offers superior durability and scratch resistance.

**B**

**BIO (BUILT-IN-OVERLAP)** Our BIO has flat edges on two adjoining sides of the Flexlam Wall panel. By orienting all sheets in the same direction and overlapping the panels, the seams are less noticeable. The placement of the sheet is also more flexible so that slight imperfections in the substrate will not affect the finished look.

When overlapping four Flexlam Wall panels, it is necessary to a 1/2" notch in panels 2 and 3 to avoid a bulge where the panels meet.

