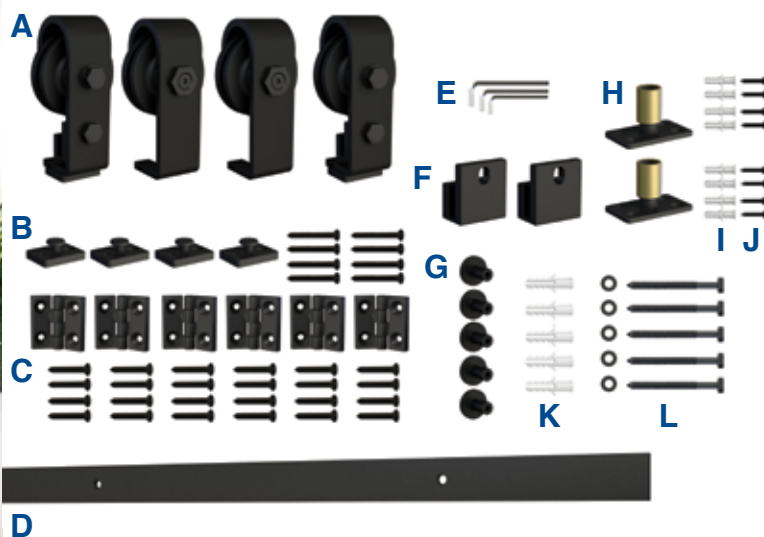
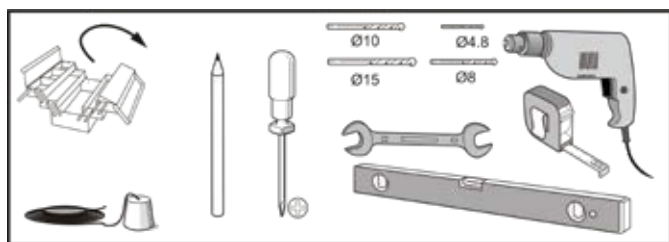


MODEL No. SDH-BF-BK-6-DD

## INSTALLATION MANUAL



### TOOLS REQUIRED

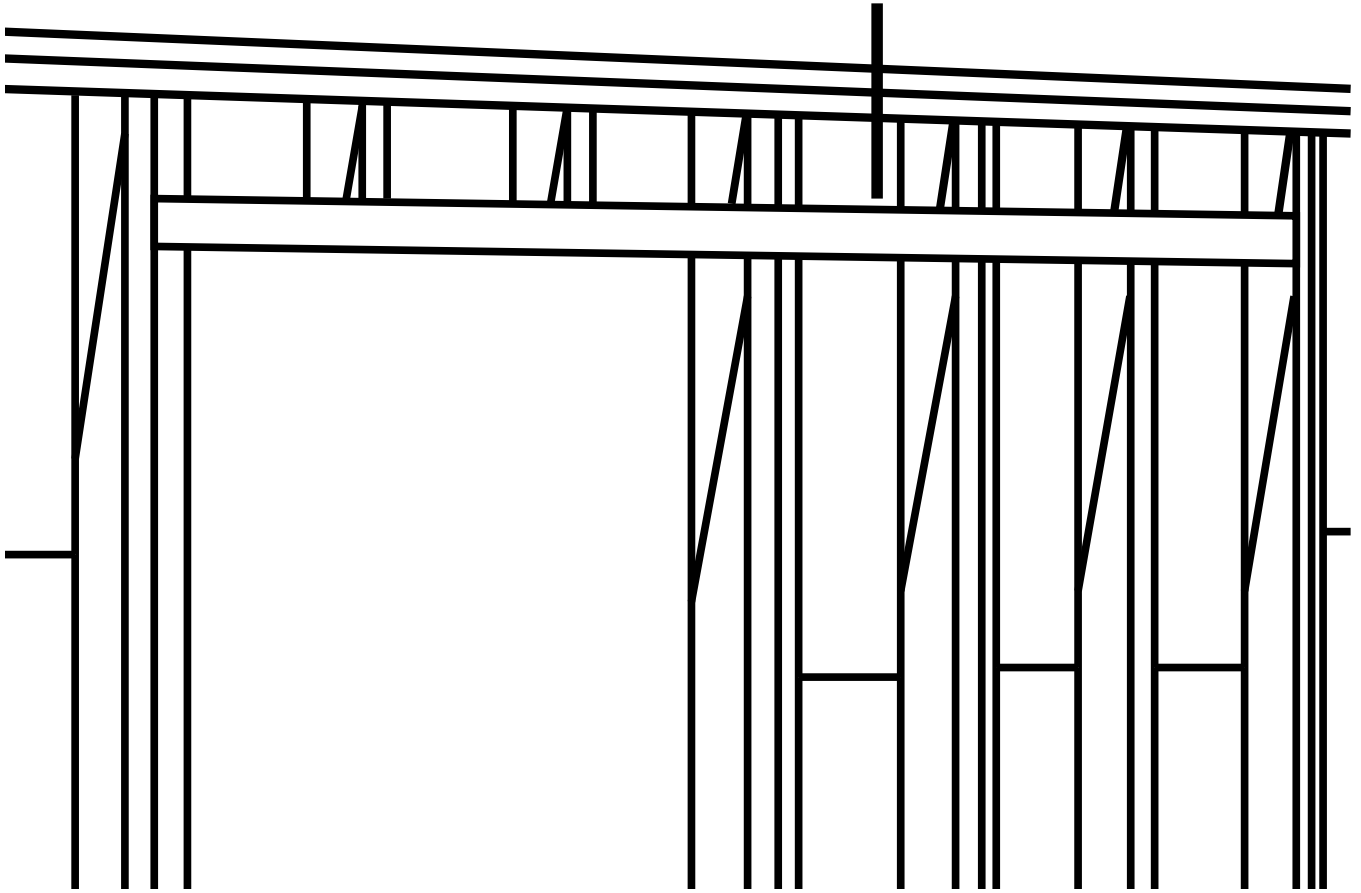


- Plumb Line
- Pencil
- Phillips Head Screwdriver
- Drill Bits [Ø15mm, Ø10mm, Ø8mm, Ø4.8mm]
- Wrench
- Level
- Tape Measure
- Power Drill

### INCLUDED IN KIT

A	End Door Roller Hardware	x2
	Mid Door Roller Hardware	x2
B	Roller Mount Hardware	x4
C	Hinge Hardware	x5
D	78-3/4" Rail	x1
E	2mm/2.5mm/4mm Allen Keys	x1
F	Door Stop	x2
G	Wall Bracket	x5
H	Routed Floor Guide	x2
I	Floor Anchor	x8
J	ST4.2x32 Screw	x8
K	Wall Anchor	x5
L	ST4.8x50 Bolt	x5

## Wall Blocking

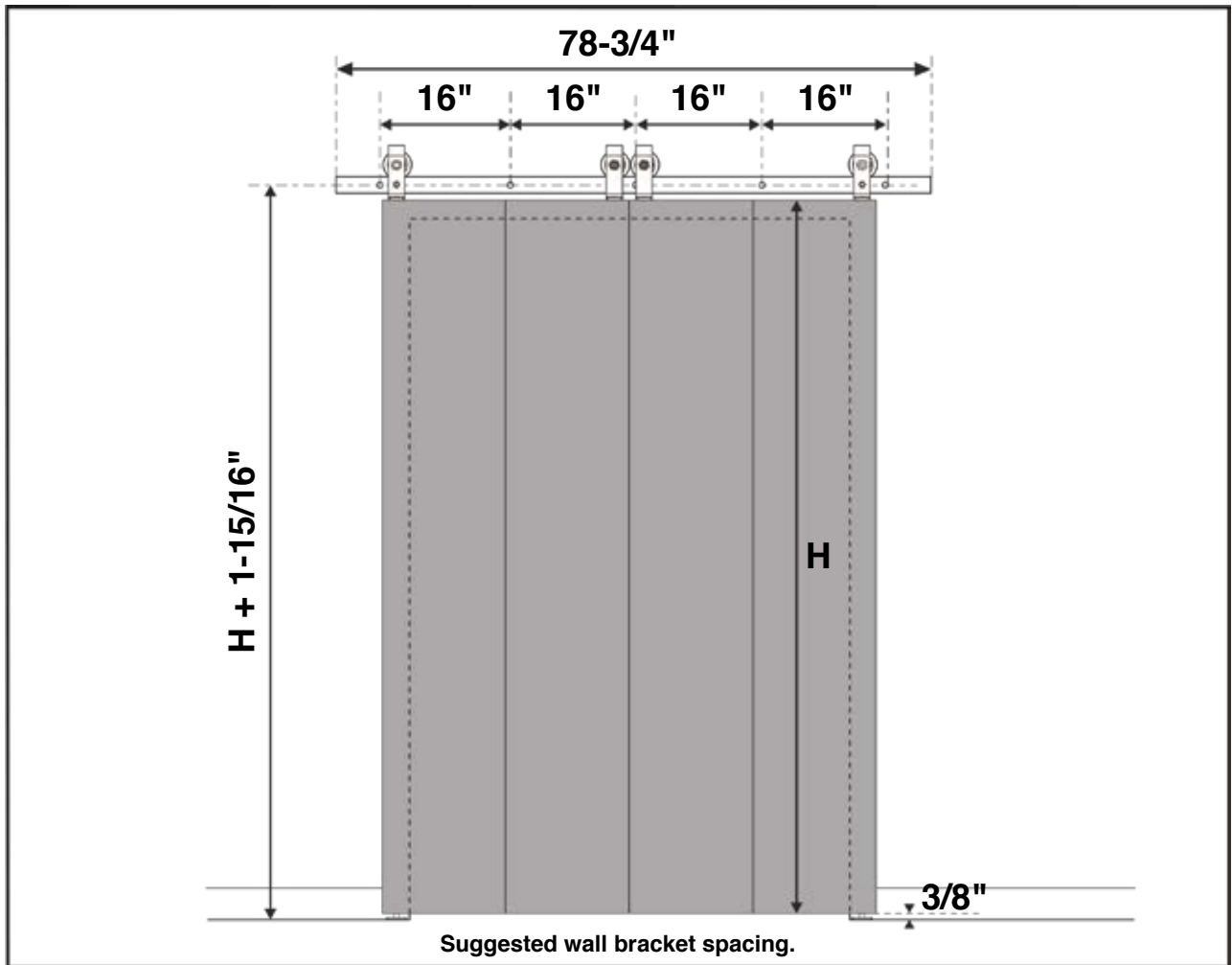


**Brackets must be secured into wall blocking.**

**NOTES:**

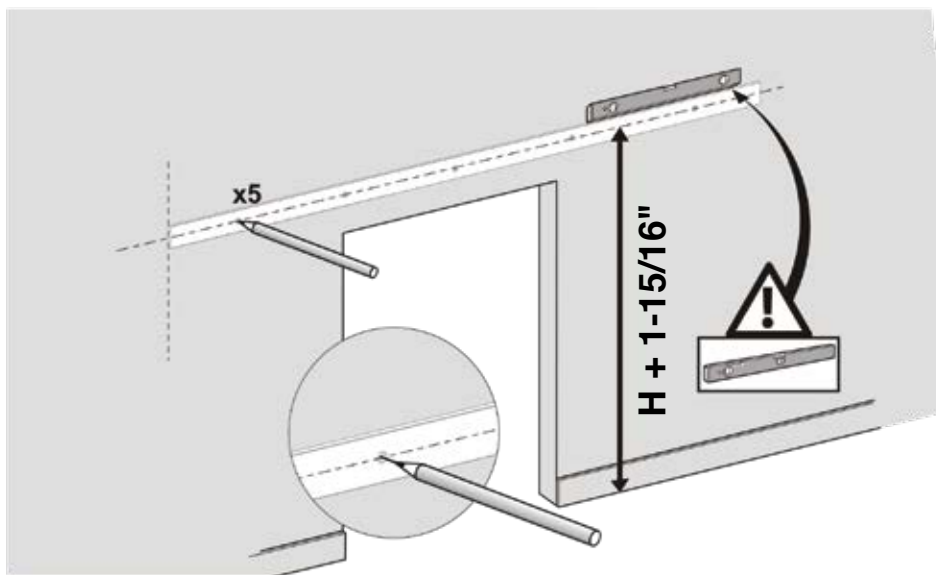
1. To obtain maximum weight capacity, all fasteners must be mounted into solid wood studs or wall blocking or mounted to a header board.
2. Adjustable mounting brackets allow for standard 16" U.S. stud spacing, or any variation.

Find the centerline of the track. Using a level, mark a horizontal line twice the door width long. Mark the bracket screw locations into the Wall Blocking. Attach the wall portion of the brackets as shown.

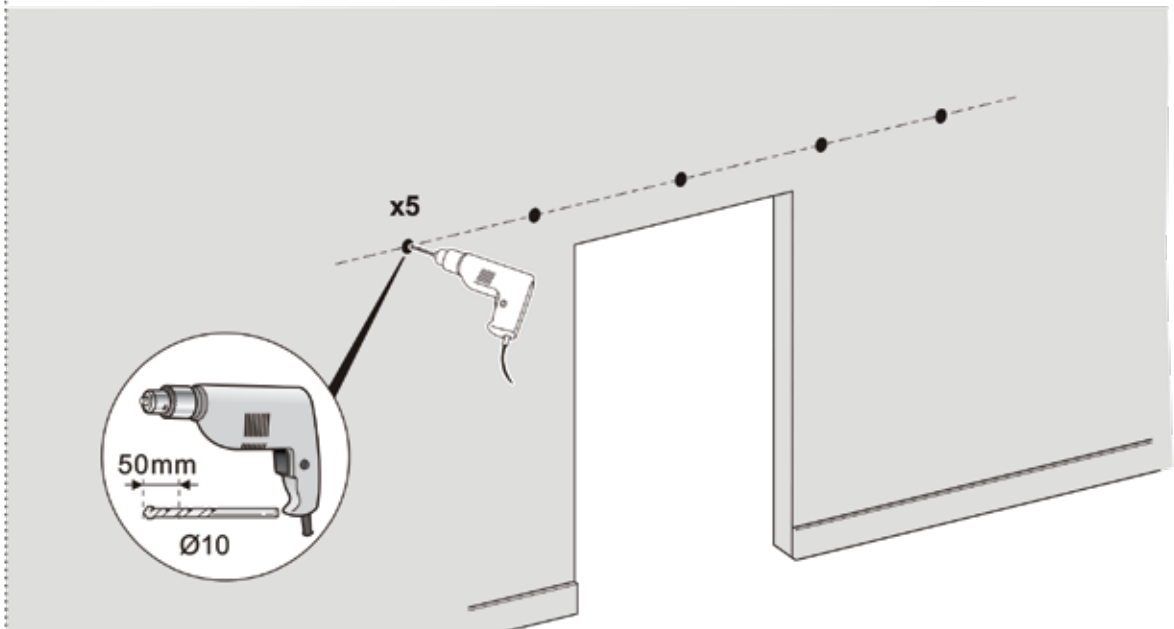


1

Find the center line of the track. Using a level, mark a horizontal line twice the door width long. Mark the bracket screw locations into the wall blocking.



2



After drilling the holes, attach the wall brackets.

3

A

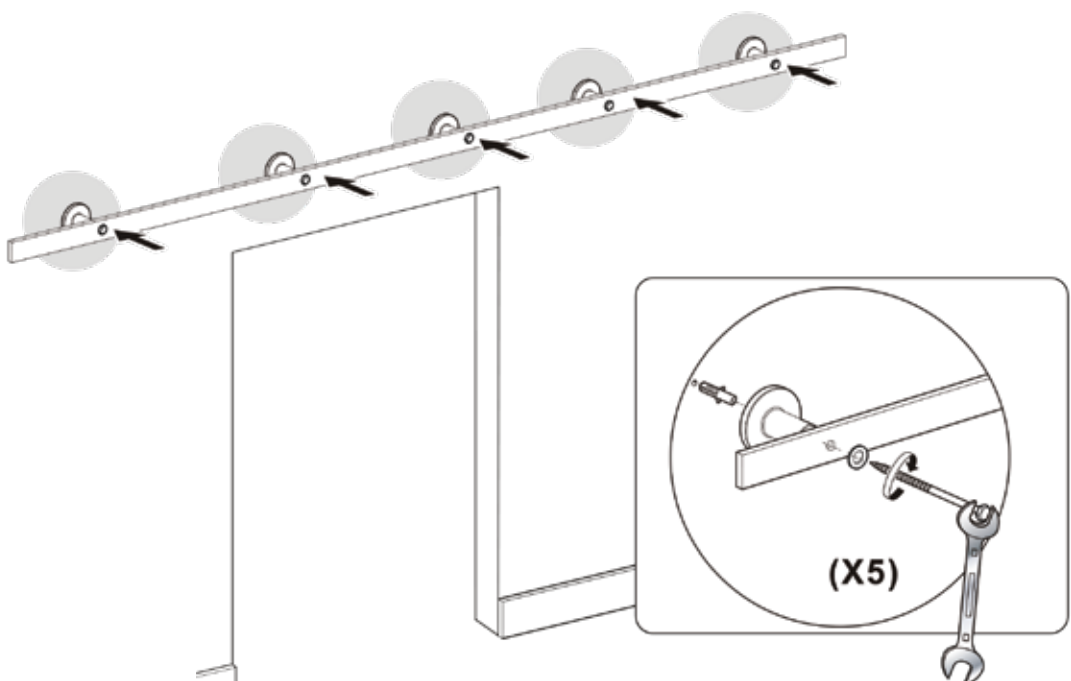
(x1)

Ø10 (x5)

ST8X110 (X5)

(x5)

(x5)



Attach the rail to the wall brackets using a wrench to fasten the bolts as shown.

4

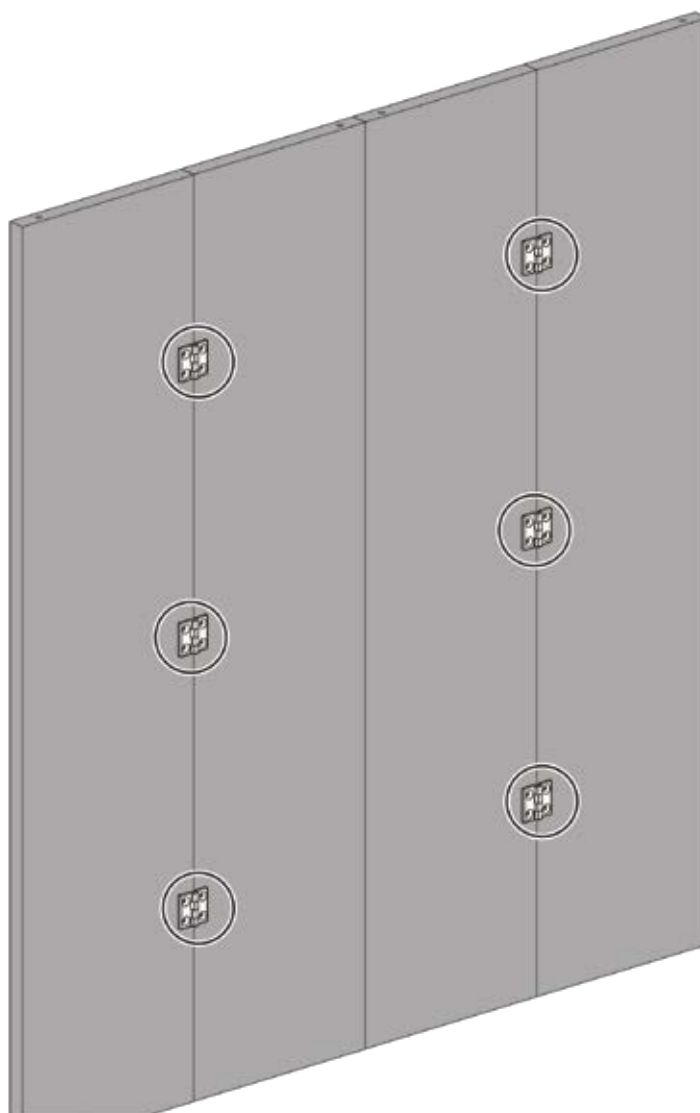
G



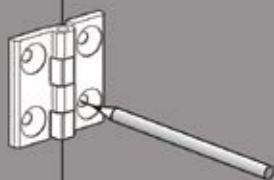
(x6)



ST6x25  
(x 24)

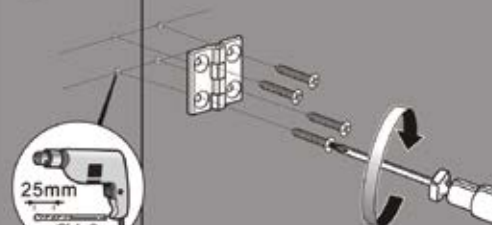


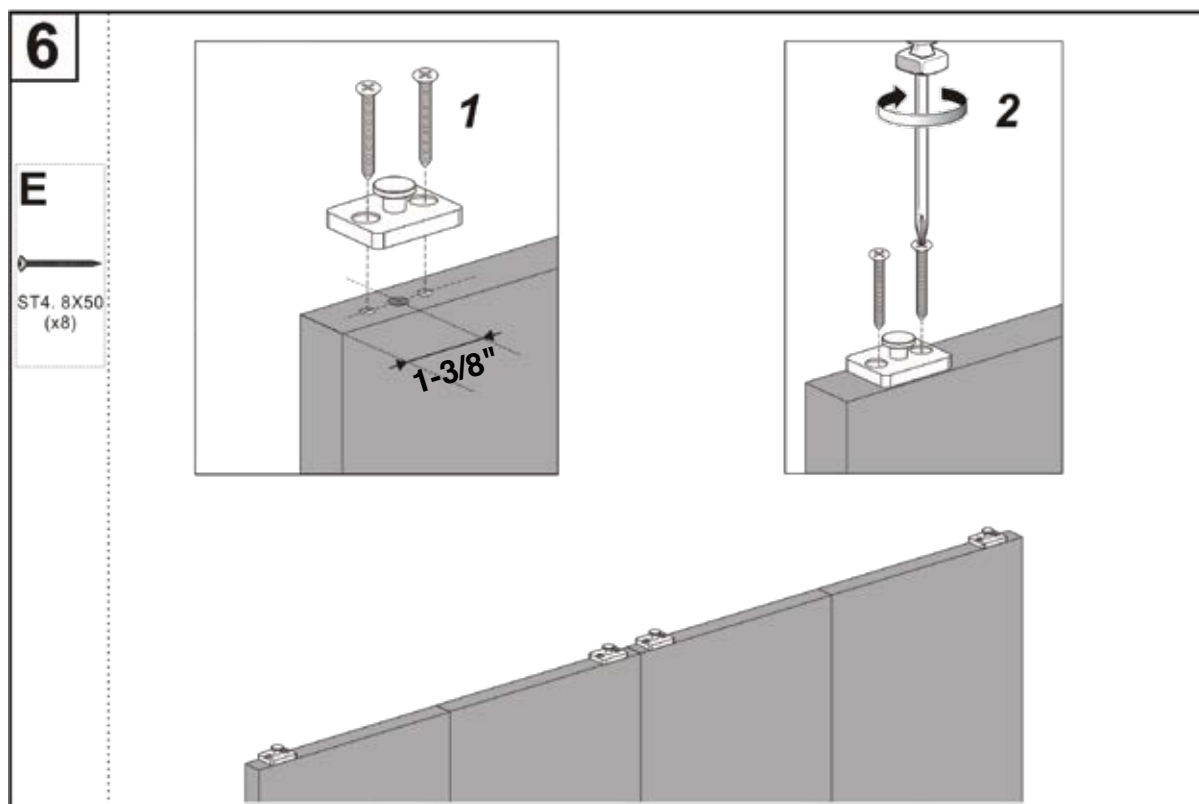
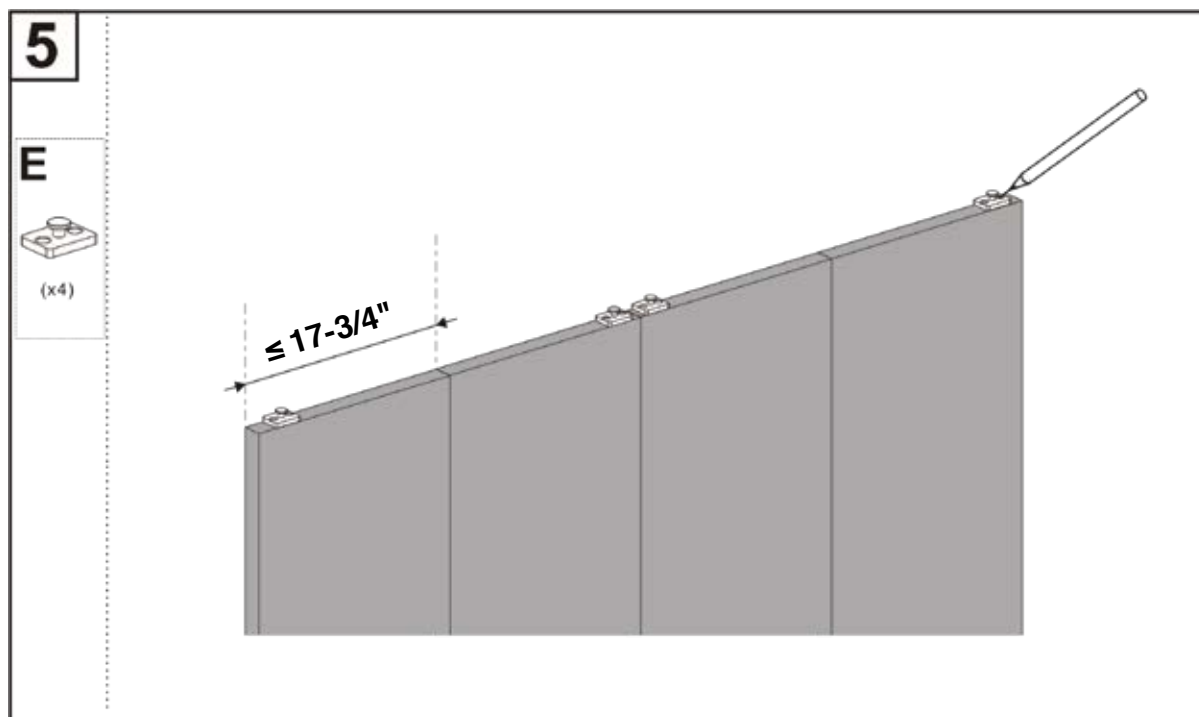
1

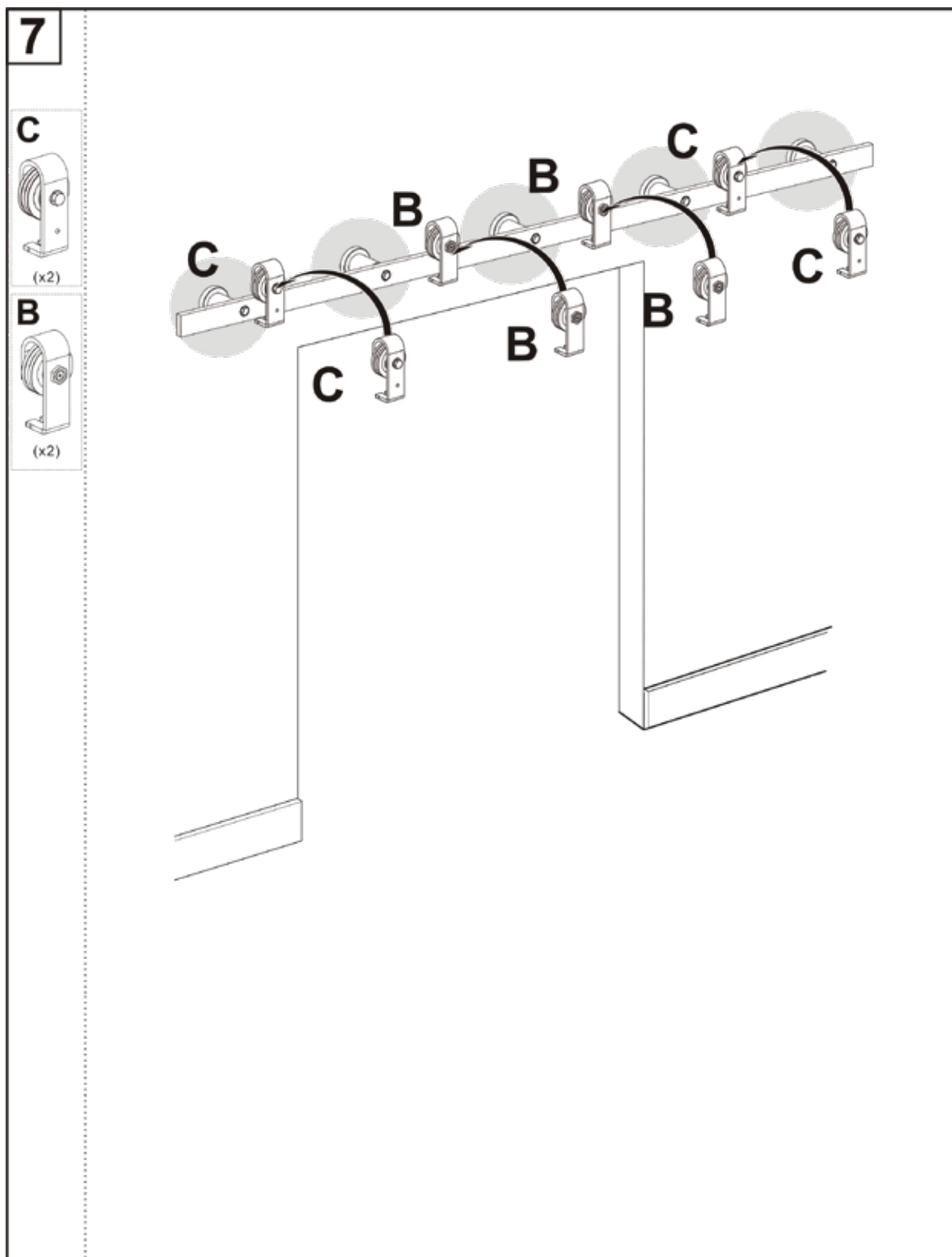


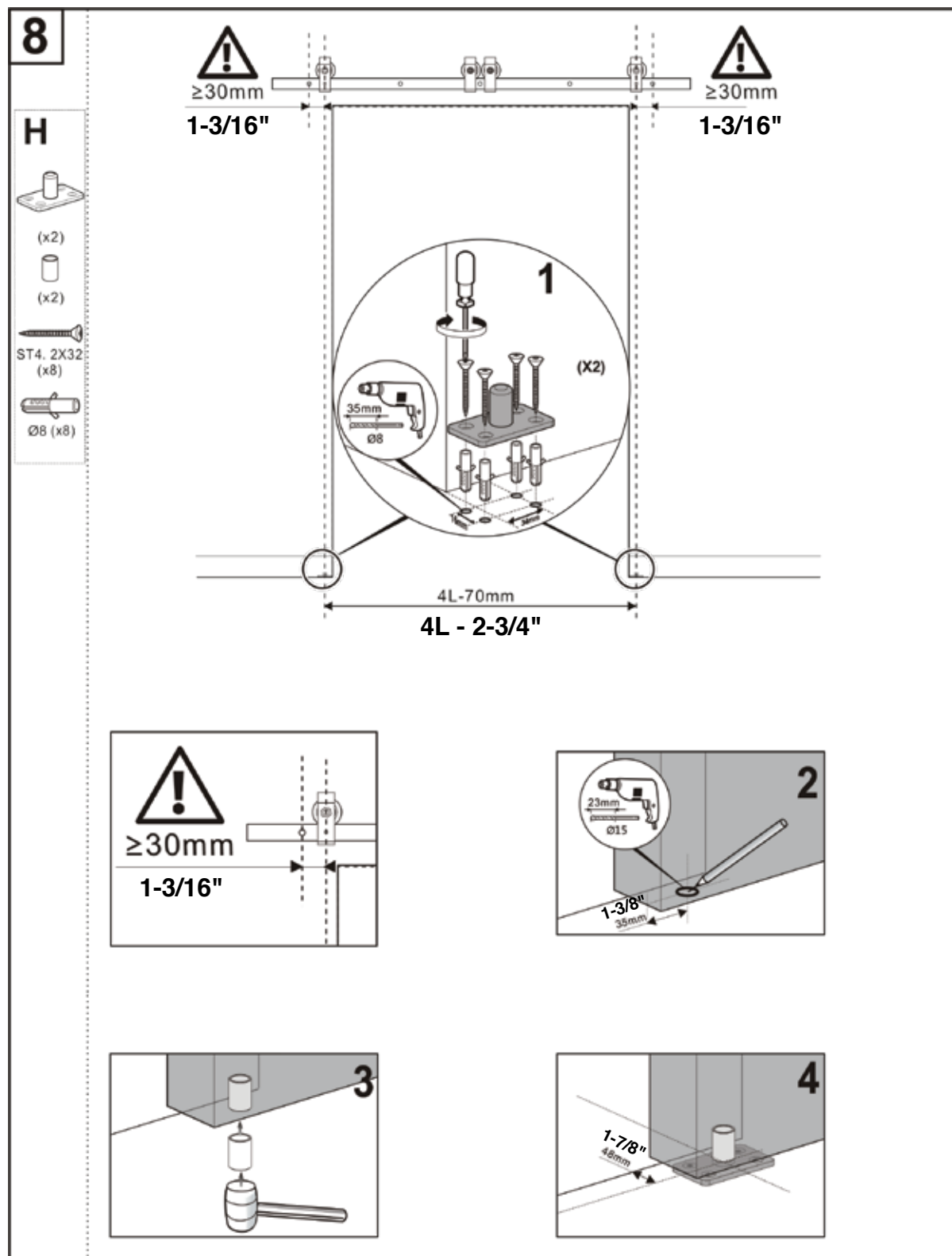
x6

2

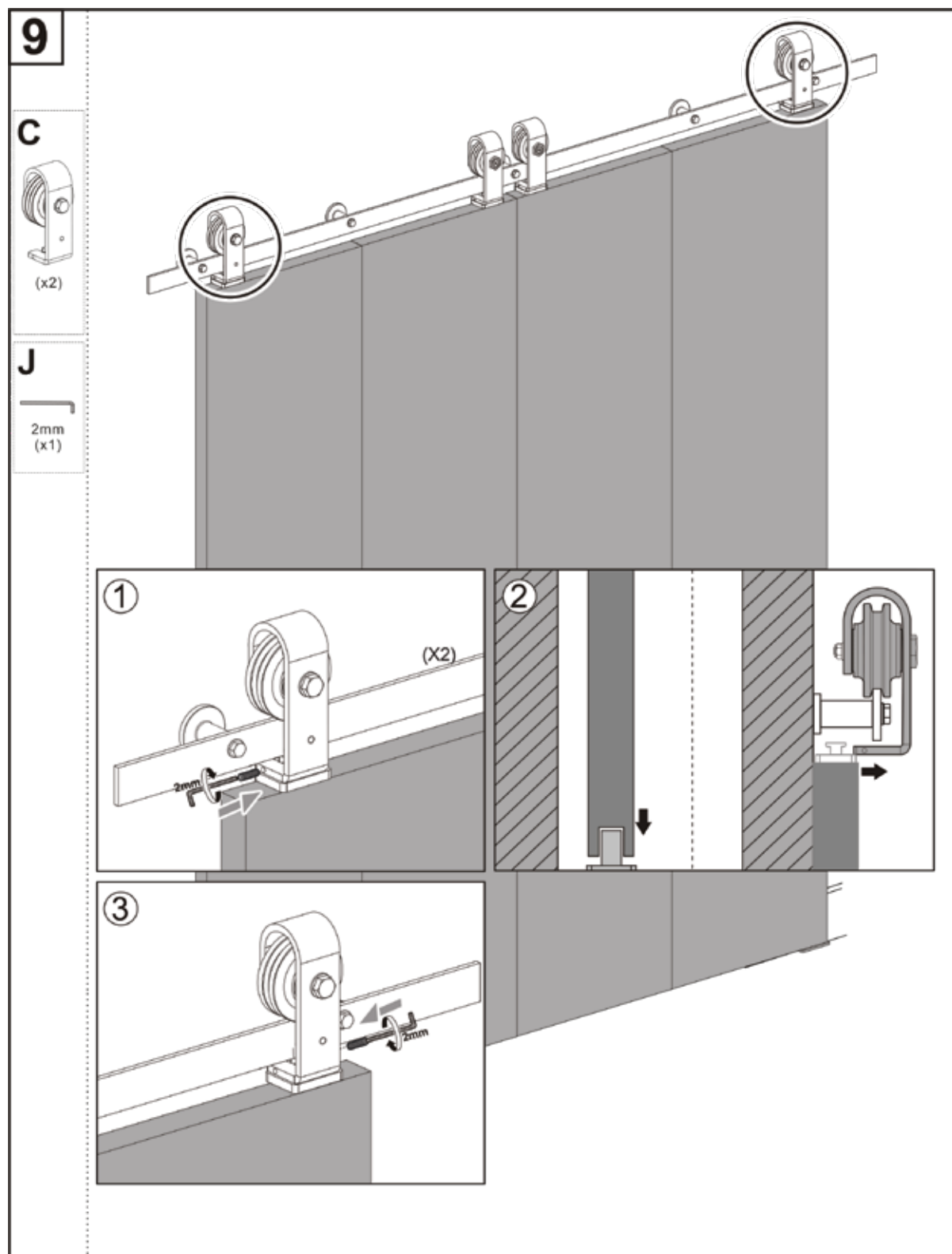












10



J

