



EPS (Expanded Polystyrene)

Lighter. Stronger. Smarter.

The thought and consideration we put into our product goes well beyond design.

Installation Guides

1. Preparation of surfaces:

- Clean all surfaces. Wall surface and moulding shall be clean and dry.
- All surfaces shall be a minimum of 38° Fahrenheit (3.3° Celsius) or higher.
- Building surface shall be level, plum and ready to accept stucco mouldings.
- Installer shall contact general contractor responsible for work if building surfaces are not level, plum and clean before application of stucco mouldings.
- All mouldings shall be cut and dry fit prior to applying any adhesive materials.

2. Apply adhesive to the back surface of stucco moulding. Use approved adhesive such as PL premium or equal for the purpose of adhering to the substrate (building surface).

- We recommend using Acro-coat cement mix when joining moulding to moulding. **When applying to Stucco, use Flexcoat adhesive and approved mesh when joining moulding to moulding.**
- When joining moulding at miter joints, remove 1/4" deep x approx. 3/8" wide of foam before applying Acro-coat material to allow for adequate adhesion. Wipe away all excess material when miter is joined together.
- Apply approved adhesive using a 3/8" notched trowel. Adhesive shall be applied vertically and all excess adhesive shall be wiped clean prior to installation.

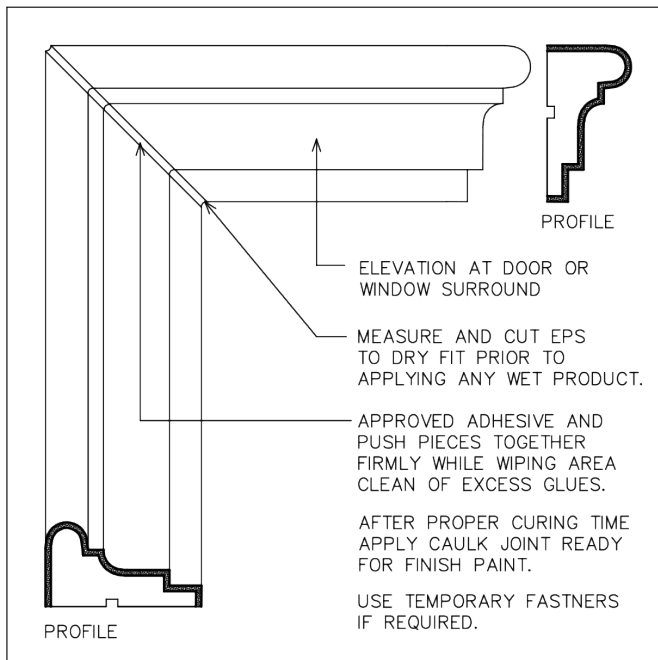
3. With adhesive applied, push moulding into place after providing all level and plum guide lines. You should use mechanical fasteners to hold mouldings while adhesive cures.

4. See detail for mechanical fastener if required, provide pre-drilled holes prior to using fastening nail.

5. Clean all surfaces of adhesive prior to adhesion during curing period.

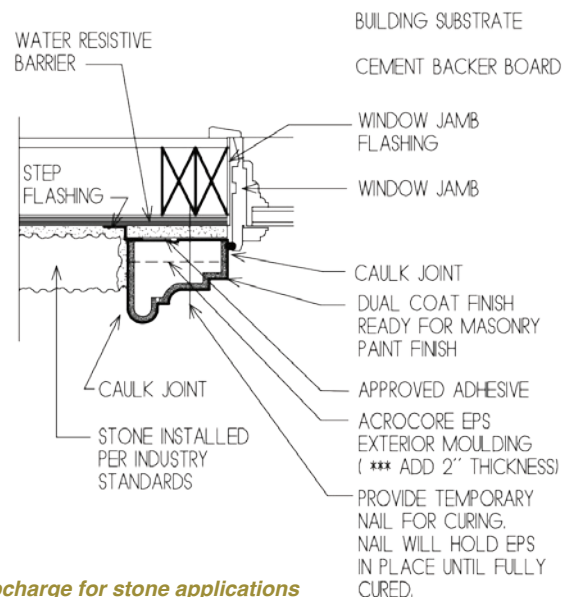
6. After adhesive cures, apply caulking at all joints between mouldings and building substrate. Provide caulking between joined mouldings.

7. Allow all materials to cure and dry before painting with elastomeric masonry, stucco & brick paint.



Stone

Add 2" thickness to stock sizes to accommodate for stone installation.



Note:
20% upcharge for stone applications due to 2" added depth of mouldings.



EPS (Expanded Polystyrene)

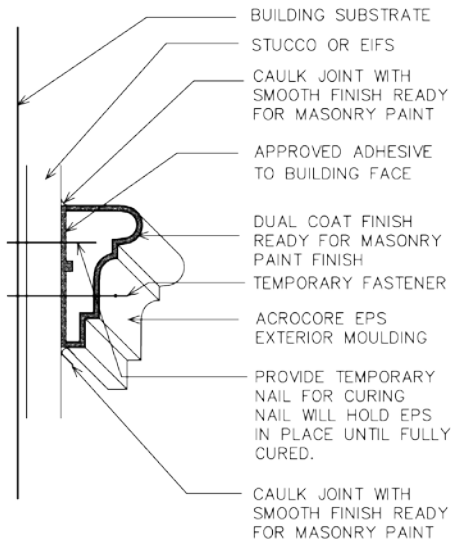
Lighter. Stronger. Smarter.

The thought and consideration we put into our product goes well beyond design.

Installation Guides

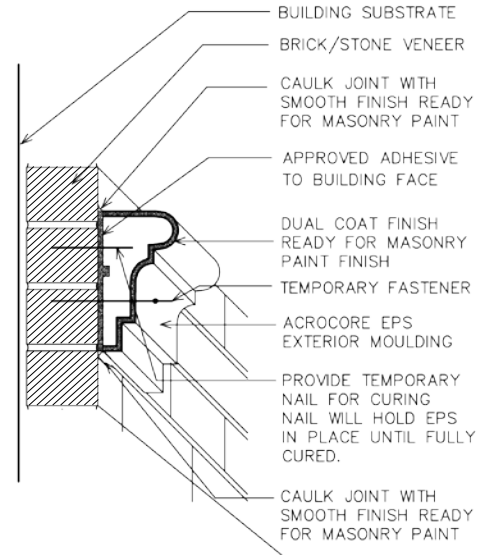
Stucco

All stock sizes apply.



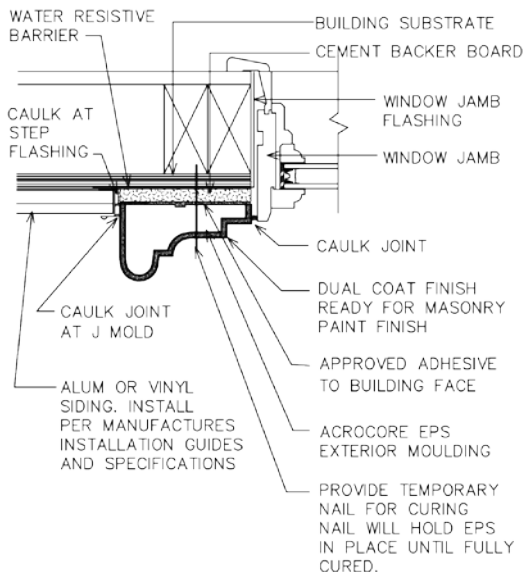
Brick

All stock sizes apply.



Vinyl or Aluminum Siding

Add 1" - 2" thickness to foam if required depending on siding thickness.



Cement or Wood Siding

Add 1" - 2" thickness to foam if required depending on siding thickness.

